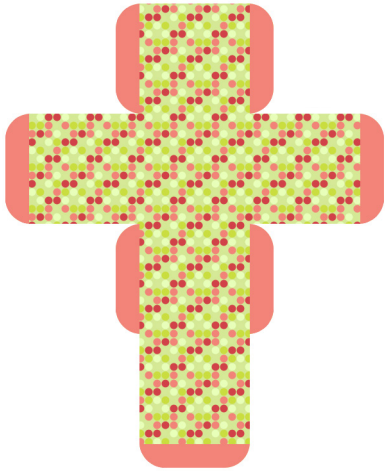


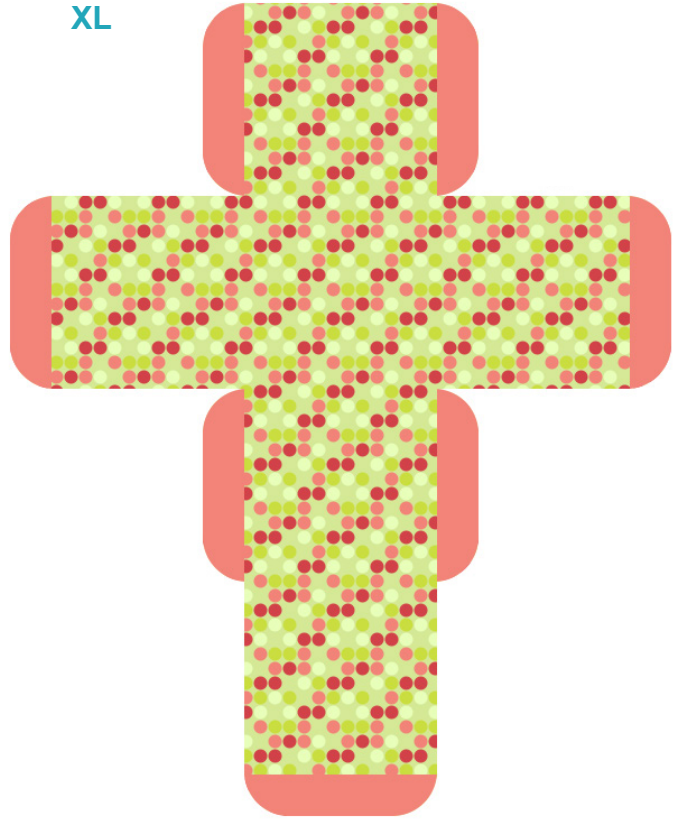
Square Box with Top Flap - Pattern 7



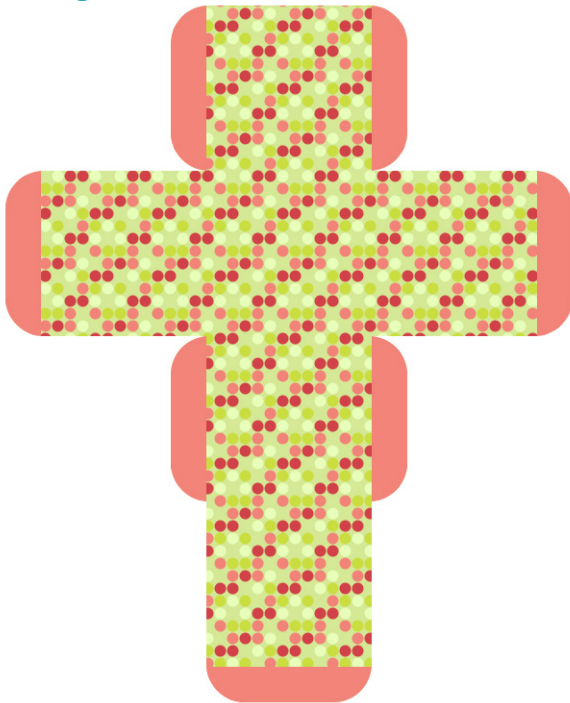
Small



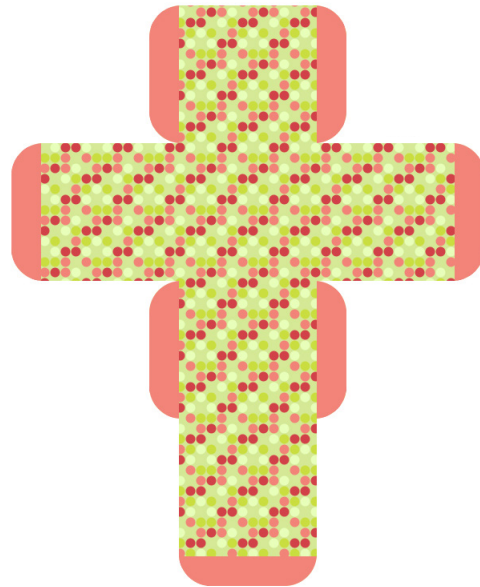
XL



Large



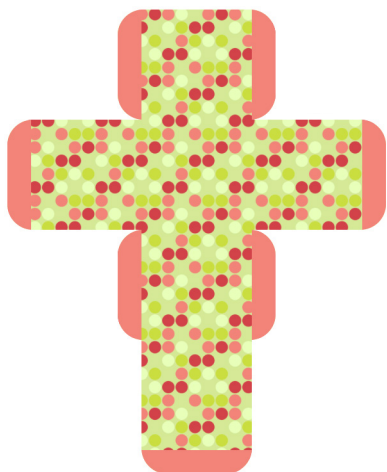
Medium



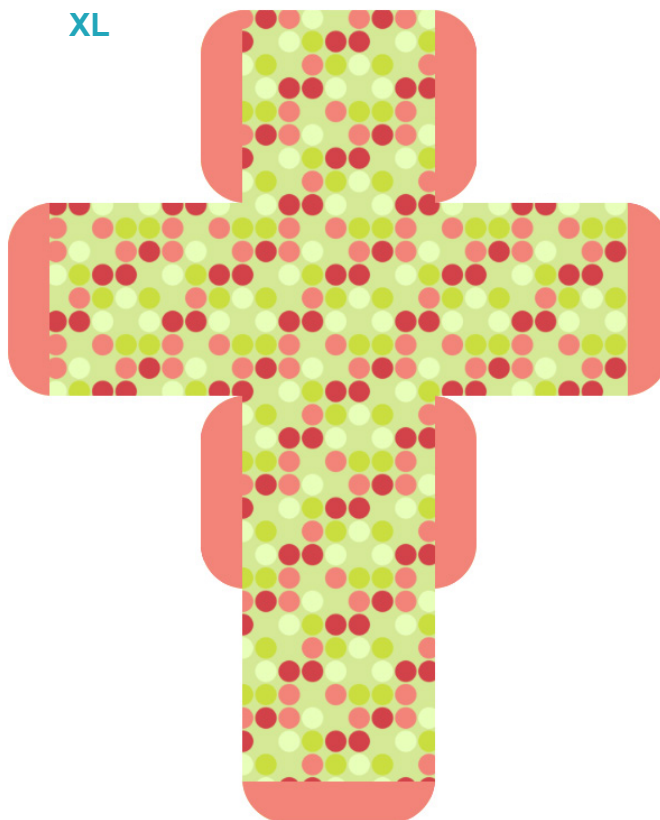
Square Box with Top Flap - Pattern 7 Larger Scale



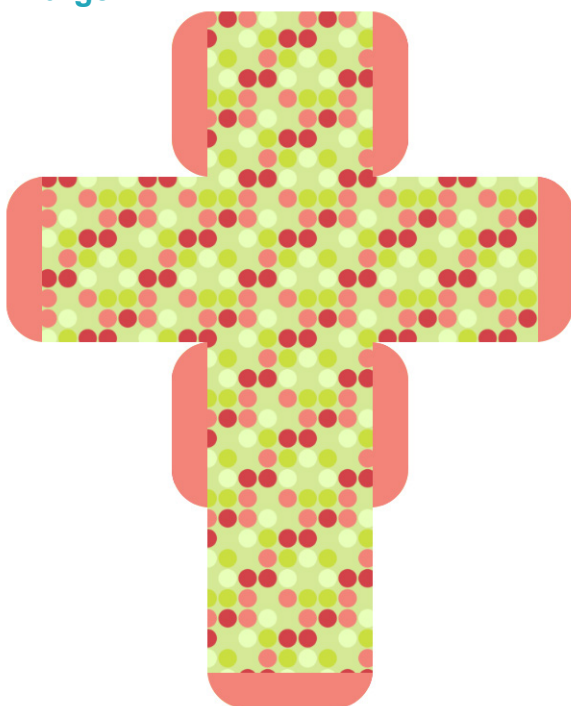
Small



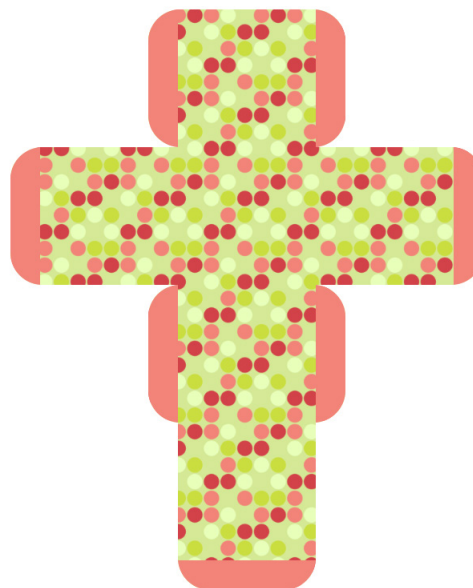
XL



Large



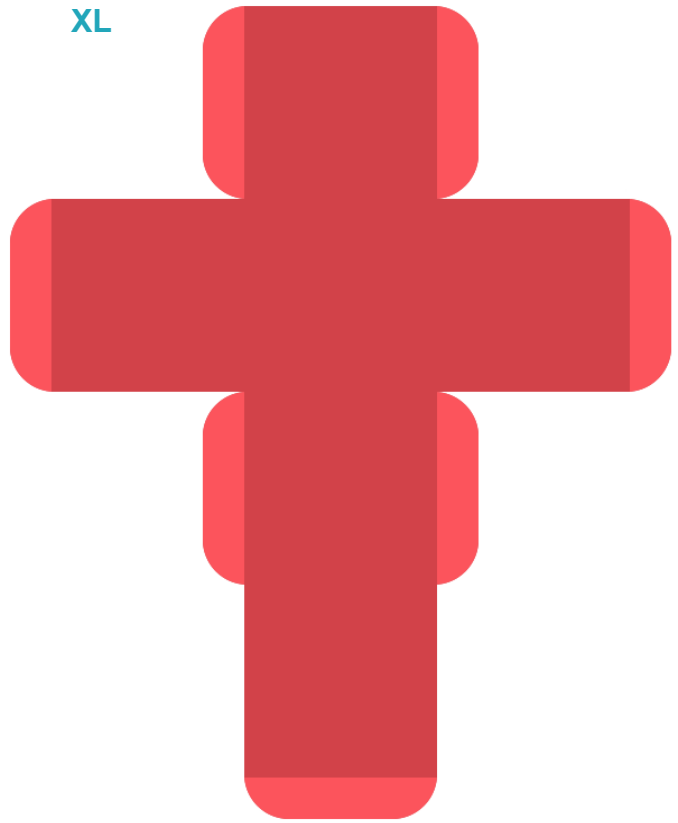
Medium



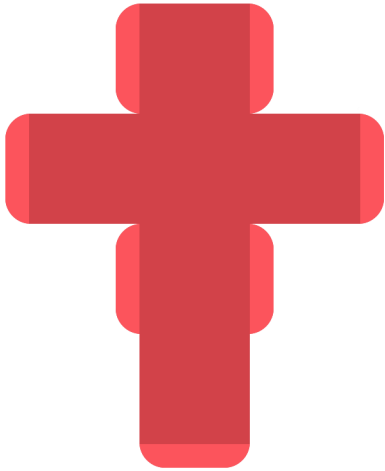
Square Box with Top Flap - Plain Red



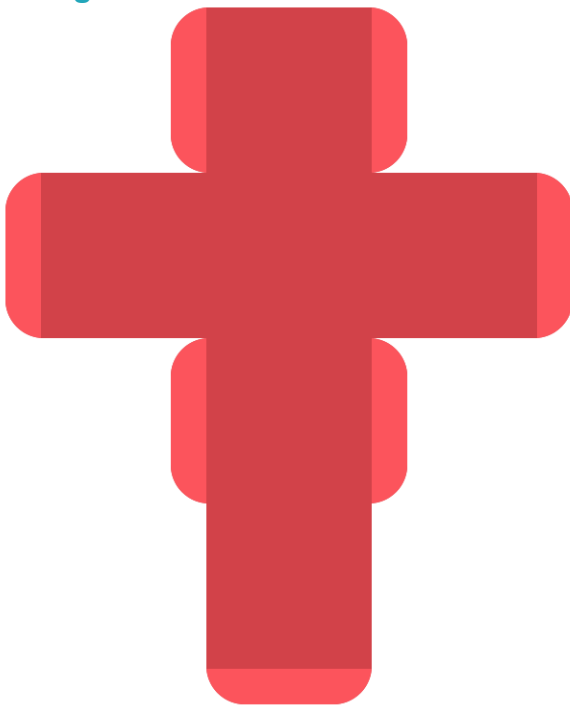
XL



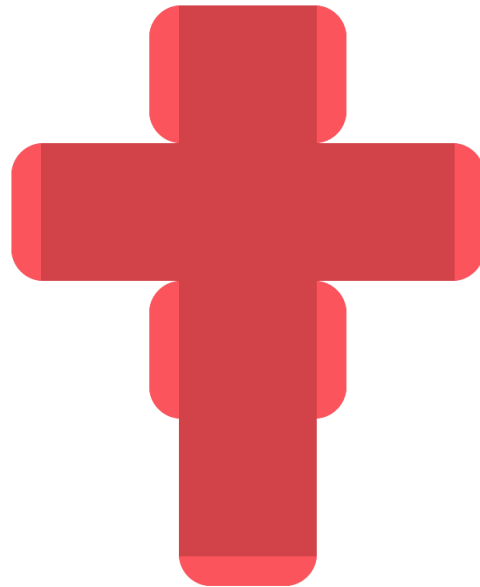
Small



Large



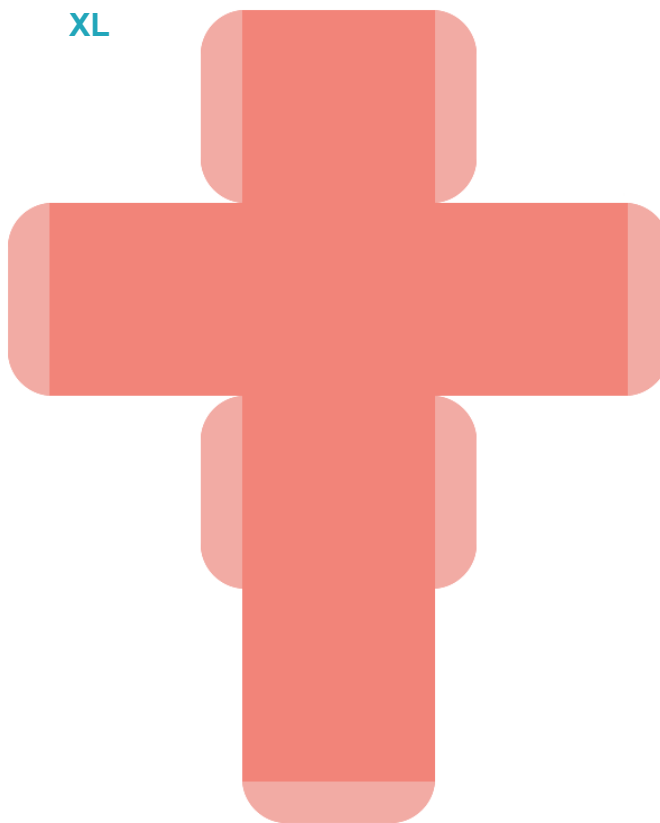
Medium



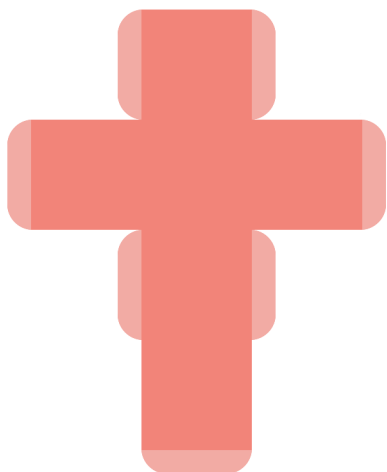
Square Box with Top Flap - Plain Pink



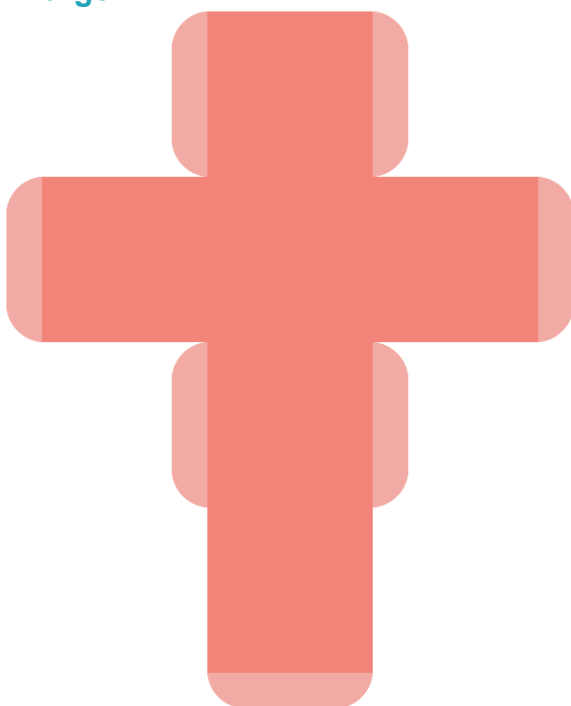
XL



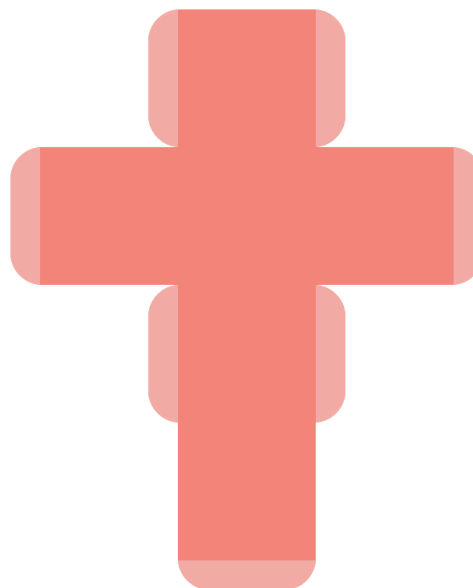
Small

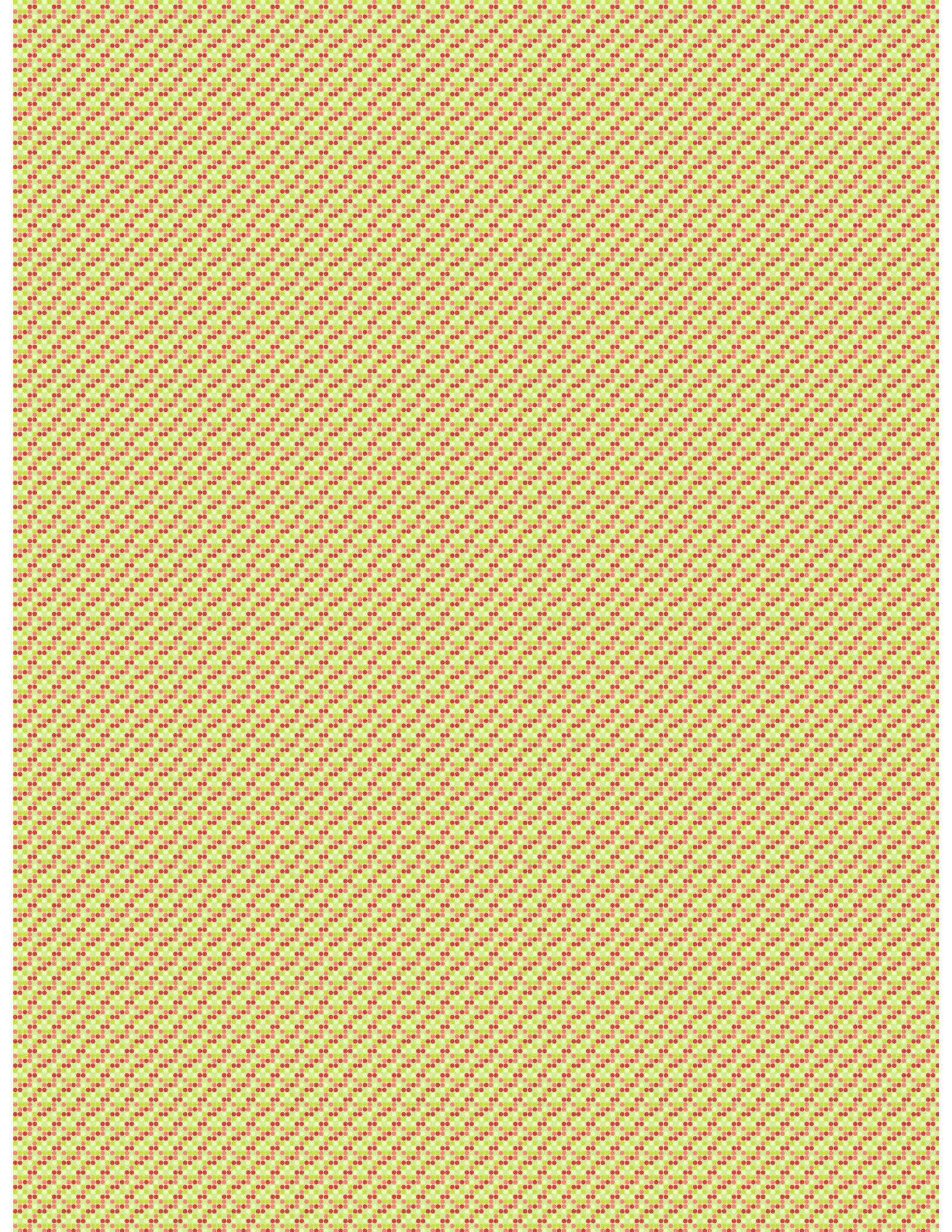


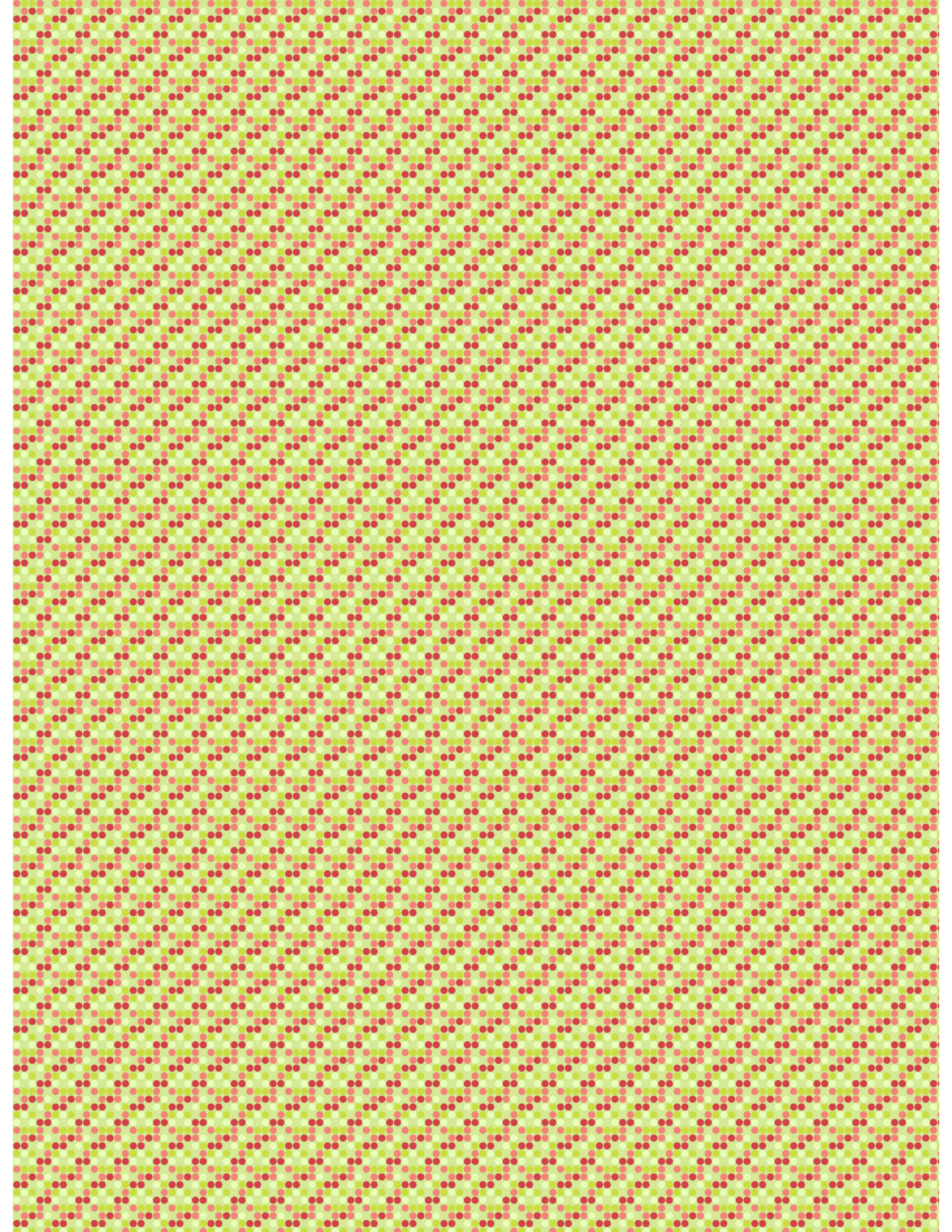
Large

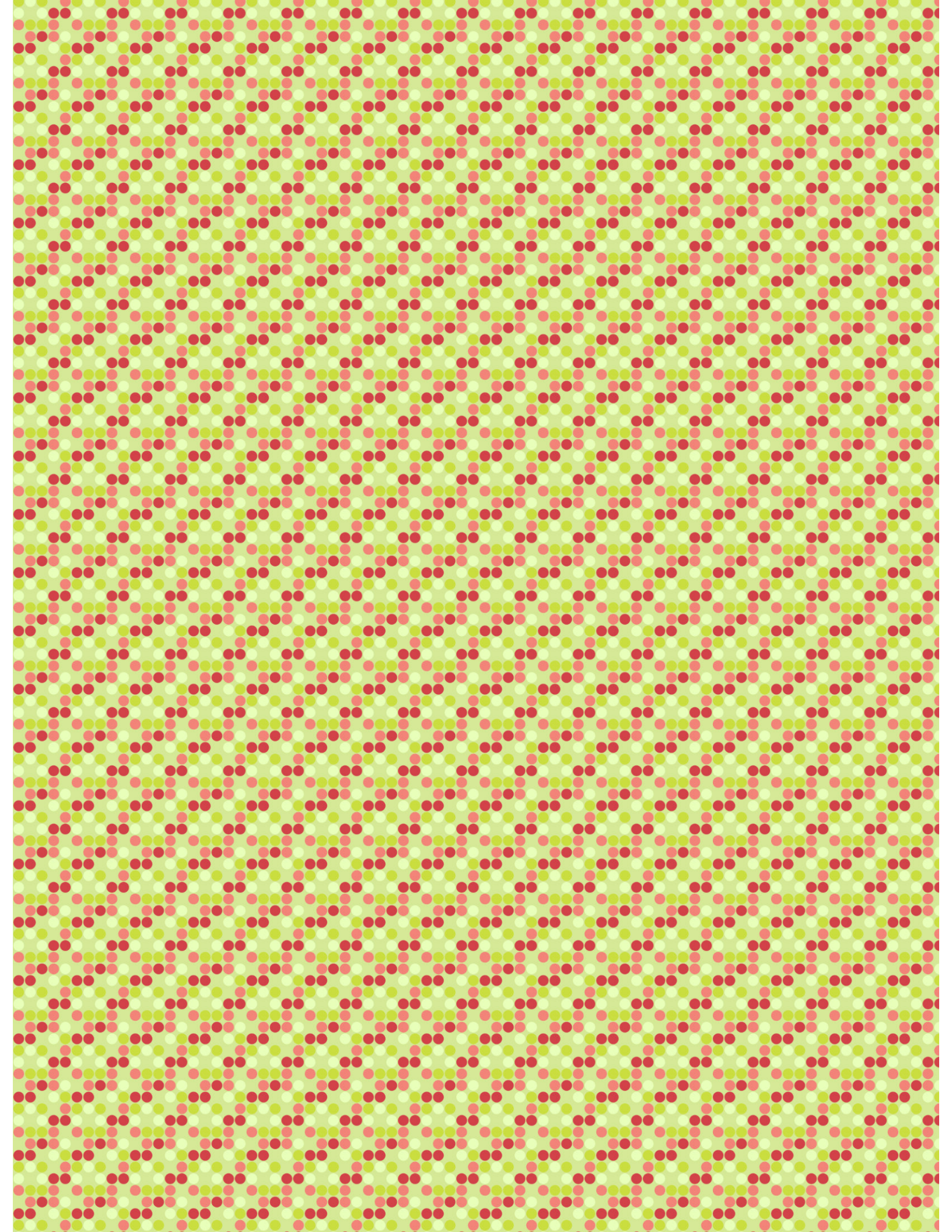


Medium









the 1990s, the number of people in the UK who are aged 65 and over has increased from 10.5 million to 13.5 million (10.5 million in 1990, 11.5 million in 1995, 12.5 million in 2000, and 13.5 million in 2005).

There are a number of reasons for this increase. One of the main reasons is that people are living longer. The life expectancy at birth in the UK is now 78 years for men and 82 years for women.

Another reason is that people are spending more of their lives in retirement. The state pension age is now 65 for men and 63 for women.

There are also a number of other factors that are contributing to the increase in the number of people aged 65 and over. These include:

- The increase in the number of people who are surviving after a diagnosis of cancer.

- The increase in the number of people who are surviving after a diagnosis of heart disease.

- The increase in the number of people who are surviving after a diagnosis of stroke.

- The increase in the number of people who are surviving after a diagnosis of dementia.

- The increase in the number of people who are surviving after a diagnosis of Parkinson's disease.

- The increase in the number of people who are surviving after a diagnosis of Alzheimer's disease.

- The increase in the number of people who are surviving after a diagnosis of multiple sclerosis.

- The increase in the number of people who are surviving after a diagnosis of rheumatoid arthritis.

- The increase in the number of people who are surviving after a diagnosis of osteoarthritis.

- The increase in the number of people who are surviving after a diagnosis of osteoporosis.

- The increase in the number of people who are surviving after a diagnosis of macular degeneration.

- The increase in the number of people who are surviving after a diagnosis of glaucoma.

- The increase in the number of people who are surviving after a diagnosis of cataracts.

- The increase in the number of people who are surviving after a diagnosis of hearing loss.

- The increase in the number of people who are surviving after a diagnosis of deafness.

- The increase in the number of people who are surviving after a diagnosis of blindness.

- The increase in the number of people who are surviving after a diagnosis of intellectual disability.

- The increase in the number of people who are surviving after a diagnosis of autism.

- The increase in the number of people who are surviving after a diagnosis of Down's syndrome.

- The increase in the number of people who are surviving after a diagnosis of sickle cell disease.

- The increase in the number of people who are surviving after a diagnosis of cystic fibrosis.

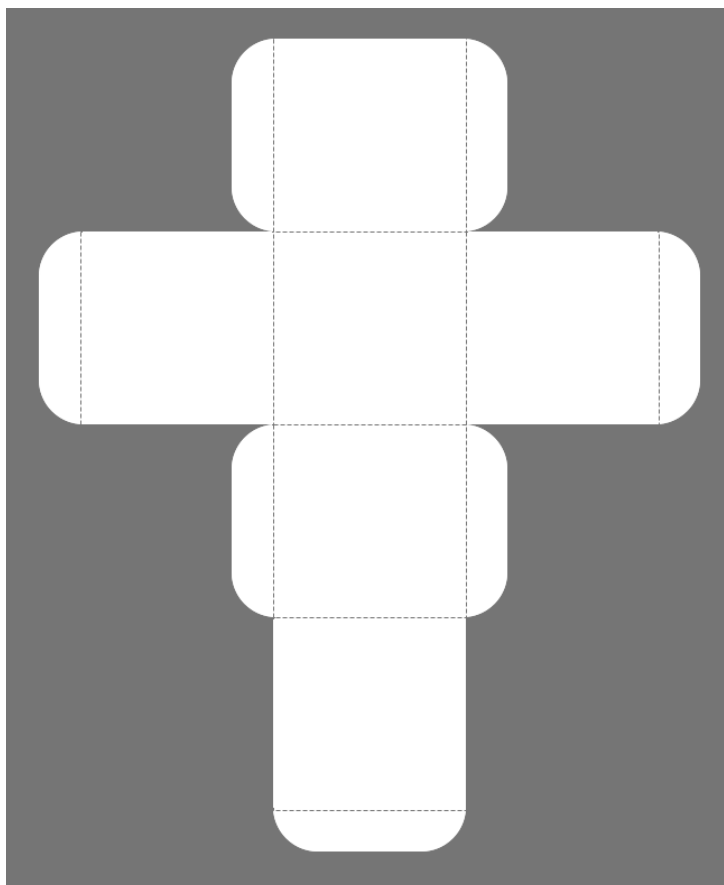
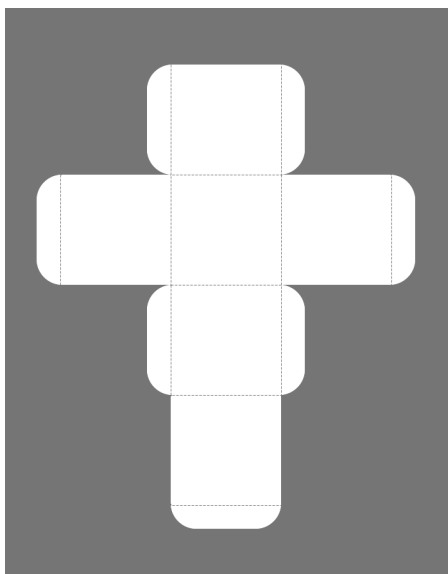
- The increase in the number of people who are surviving after a diagnosis of haemophilia.

Square Box with Top Flap Template with Fold Lines

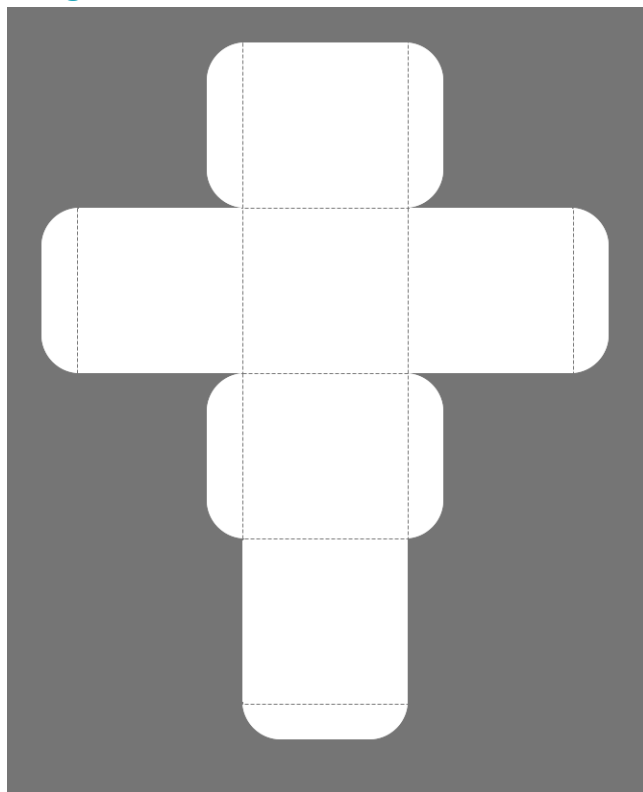


XL

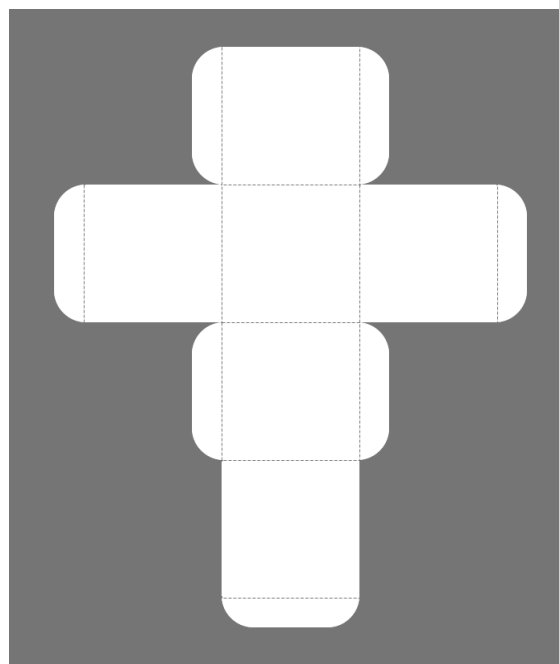
Small



Large



Medium



Visit sunidoll.com for more patterns and tutorials.

SUNI