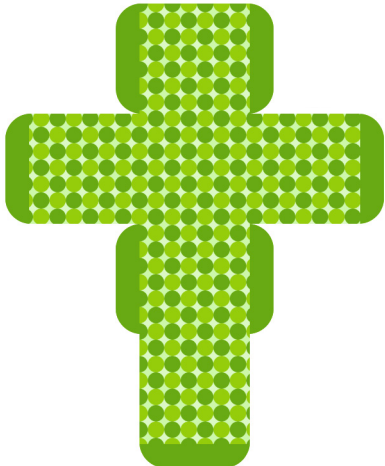


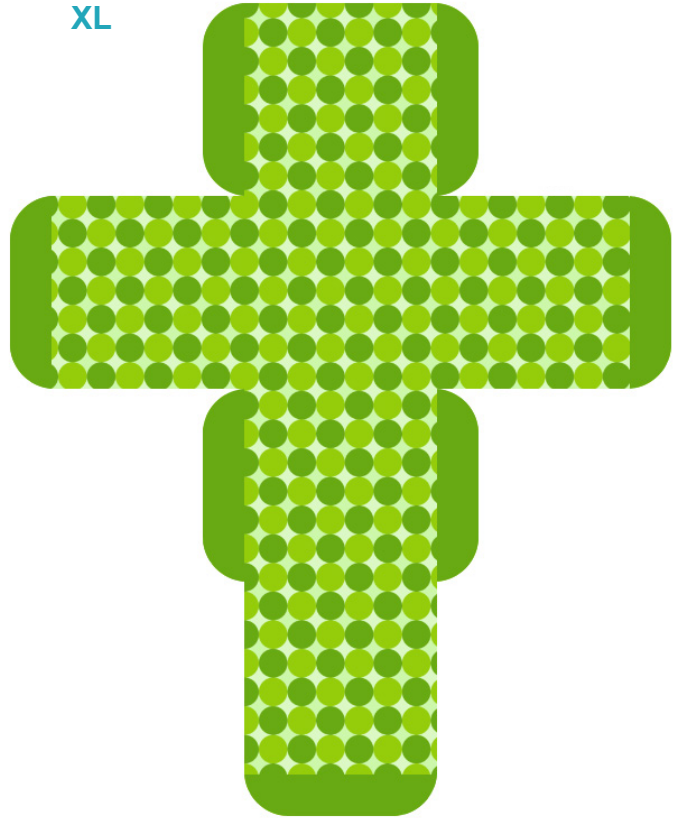
Square Box with Top Flap - Pattern 5



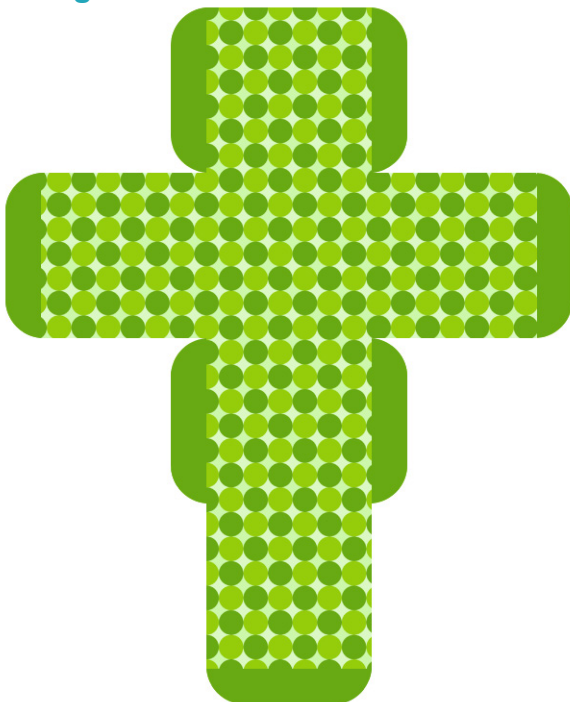
Small



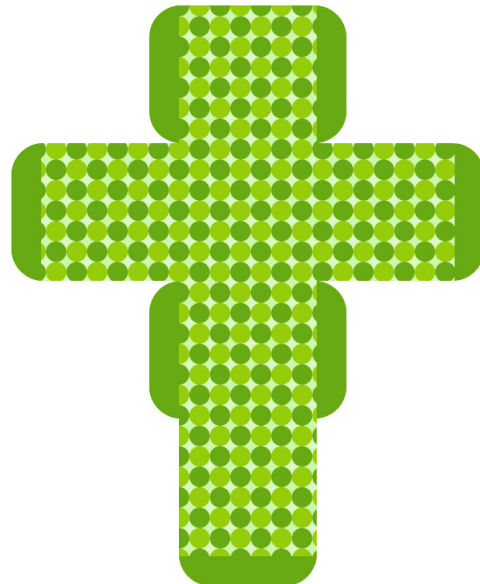
XL



Large



Medium



Square Box with Top Flap - Plain Green



XL



Small



Large



Medium



Square Box with Top Flap - Plain Lime Green



XL



Small

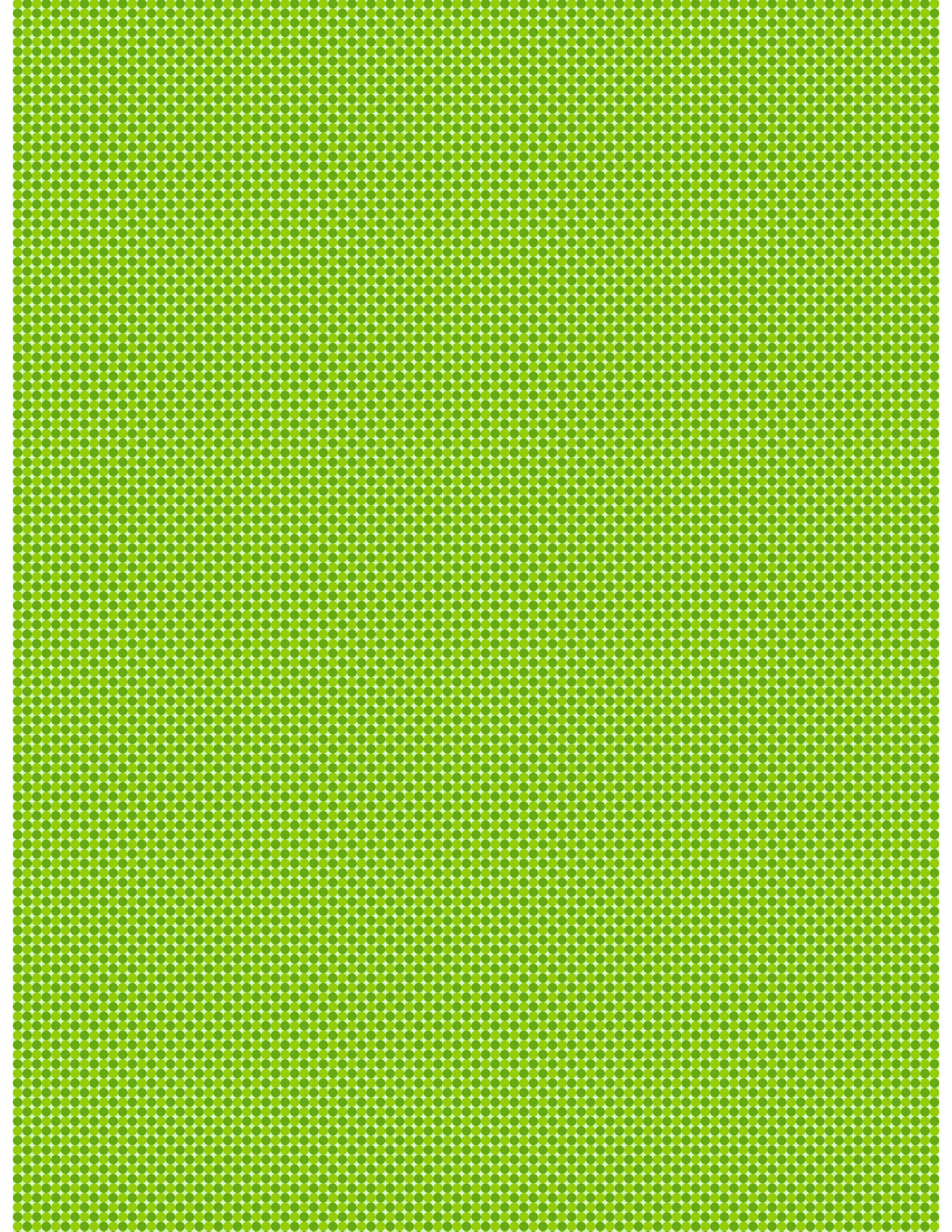


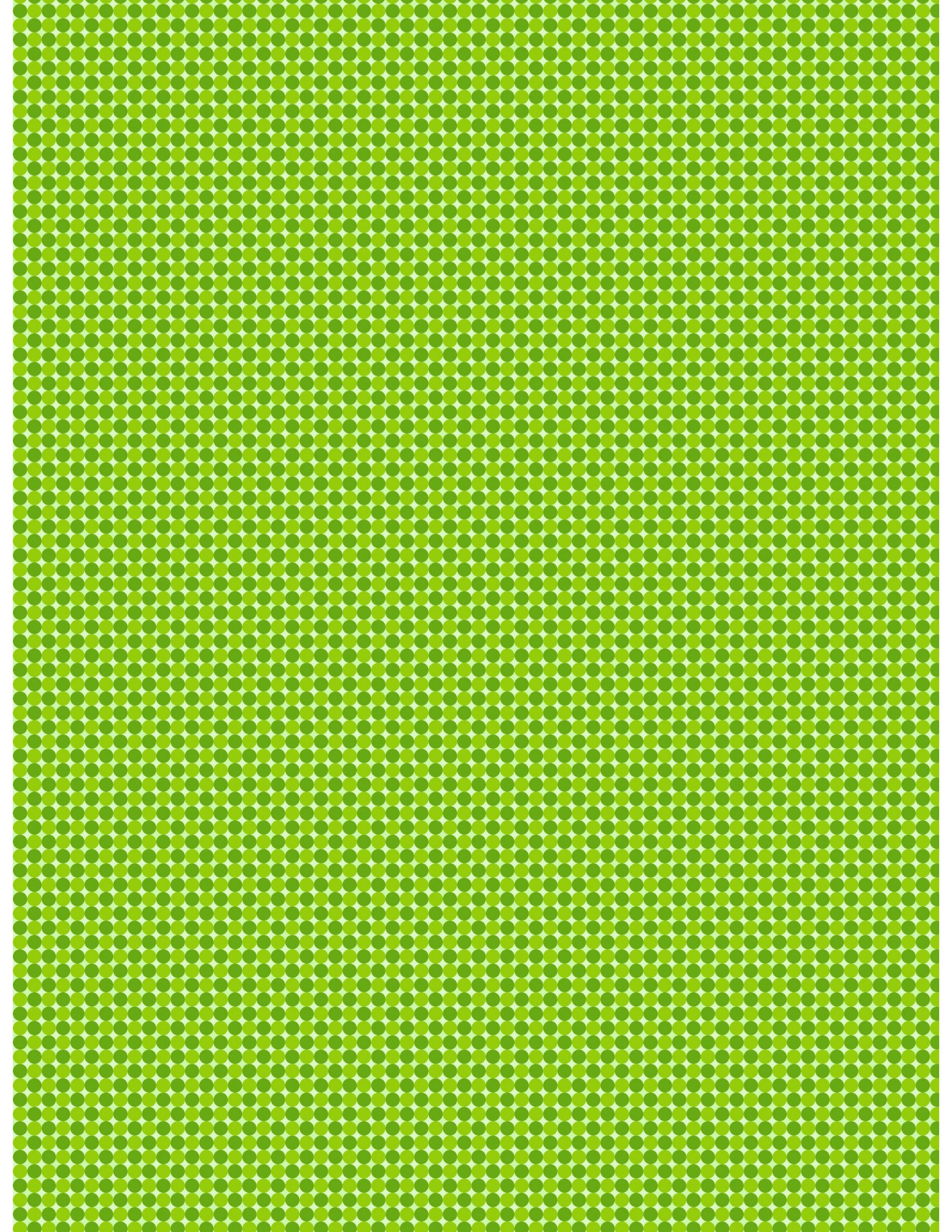
Large



Medium







The first part of the document discusses the importance of maintaining accurate records of all transactions. It emphasizes that every entry should be supported by a valid receipt or invoice. This not only helps in tracking expenses but also ensures compliance with tax regulations.

In the second section, the author provides a detailed breakdown of the company's revenue streams. This includes sales from various product lines, licensing fees, and consulting services. Each category is analyzed to identify trends and opportunities for growth.

The third section focuses on the company's operational costs. It details expenses related to salaries, rent, utilities, and marketing. The goal is to identify areas where costs can be reduced without compromising the quality of services provided.

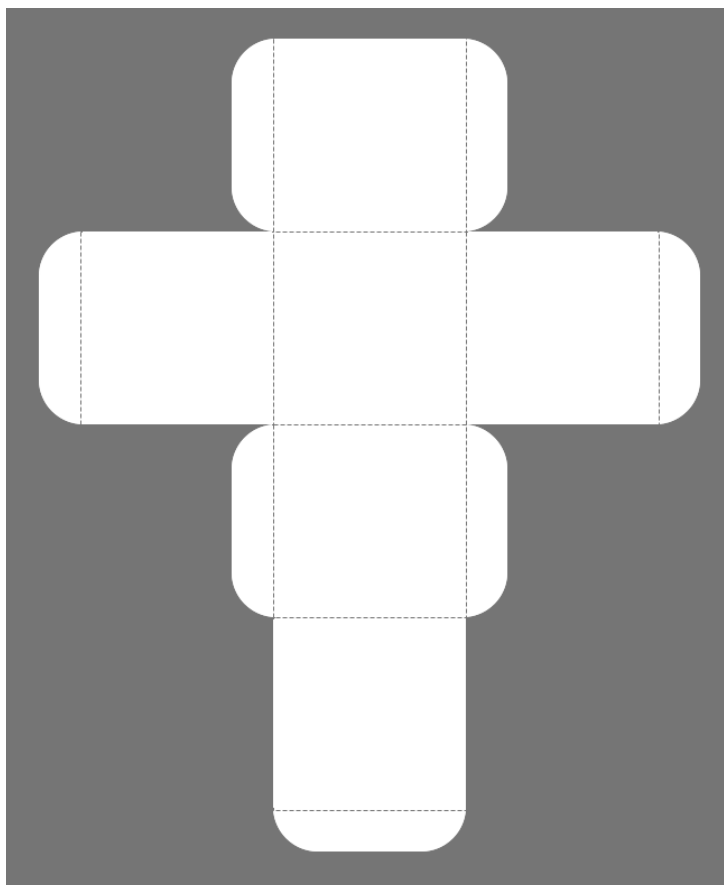
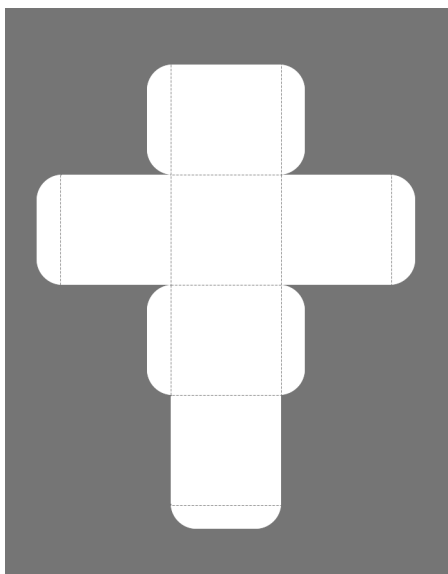
Finally, the document concludes with a summary of the overall financial performance. It highlights the company's profitability and provides recommendations for future strategic planning. The author stresses the need for continuous monitoring and adjustment of financial strategies to stay competitive in the market.

Square Box with Top Flap Template with Fold Lines

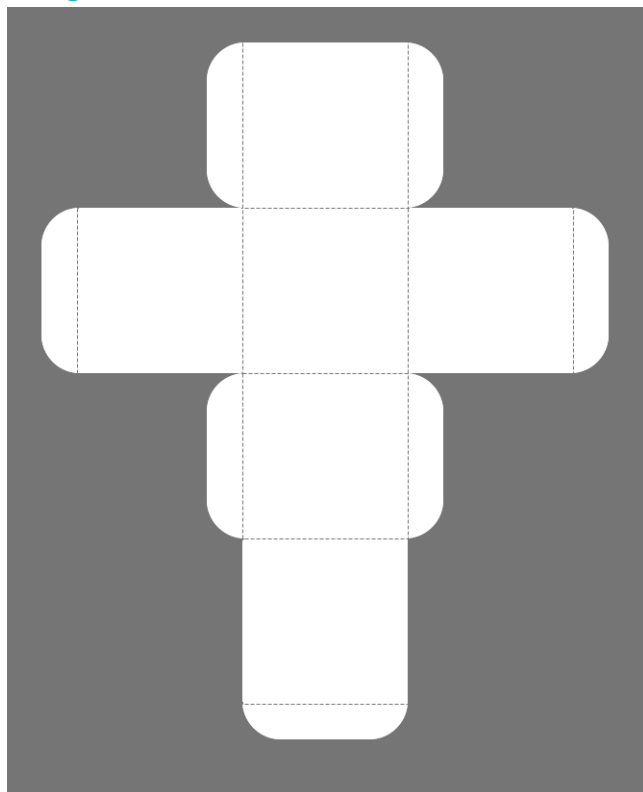


XL

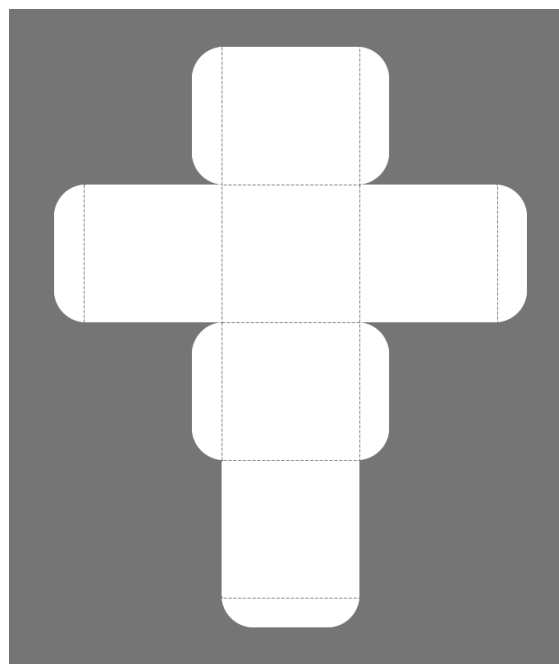
Small



Large



Medium



Visit sunidoll.com for more patterns and tutorials.

SUNI