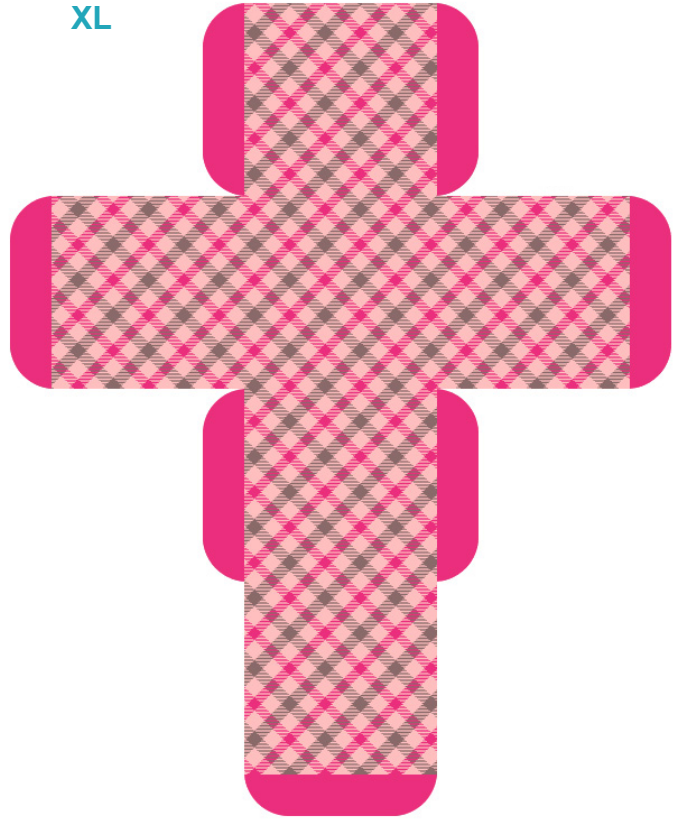


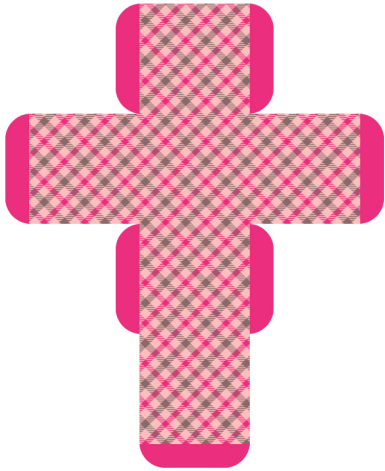
Square Box with Top Flap - Pattern 24



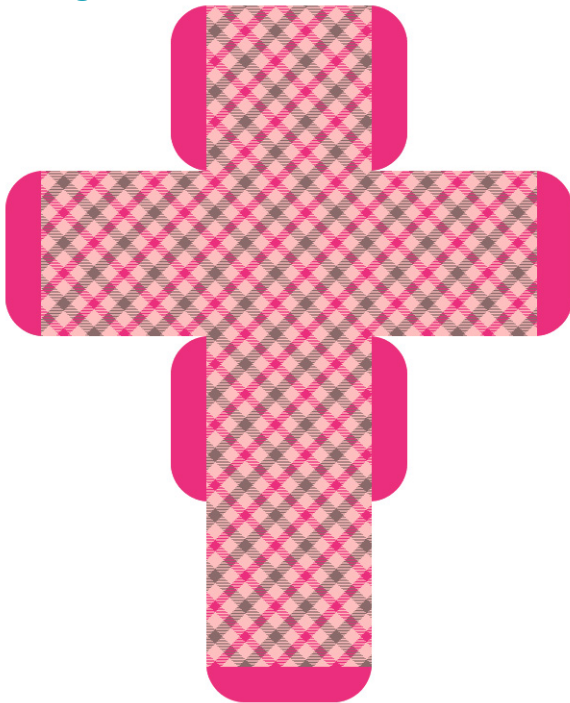
XL



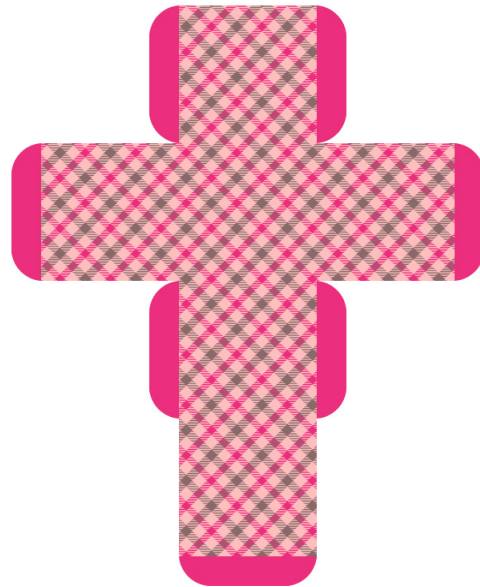
Small



Large



Medium



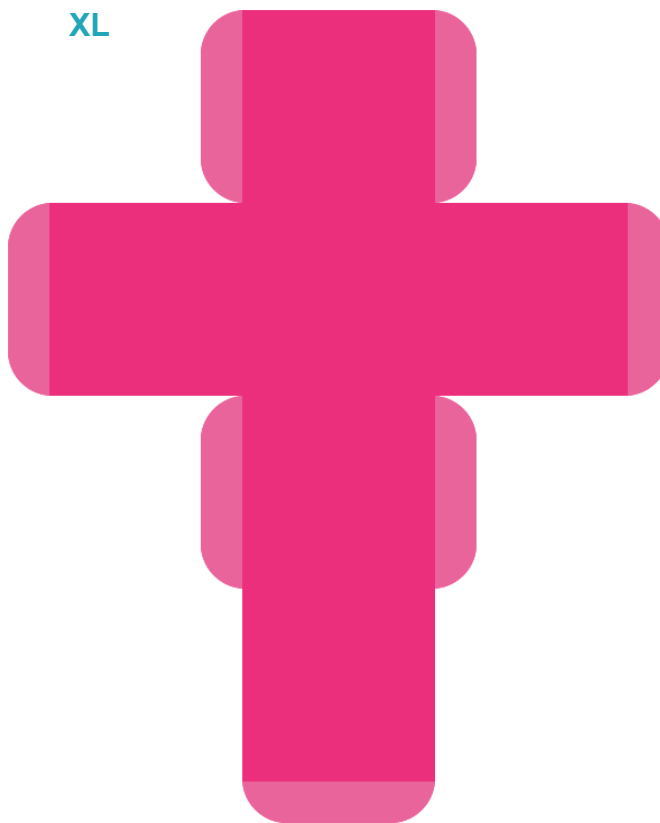
Visit sunidoll.com for more patterns and tutorials.

SUNI

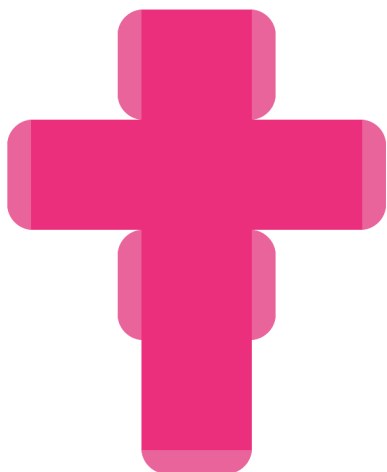
Square Box with Top Flap - Plain Pink



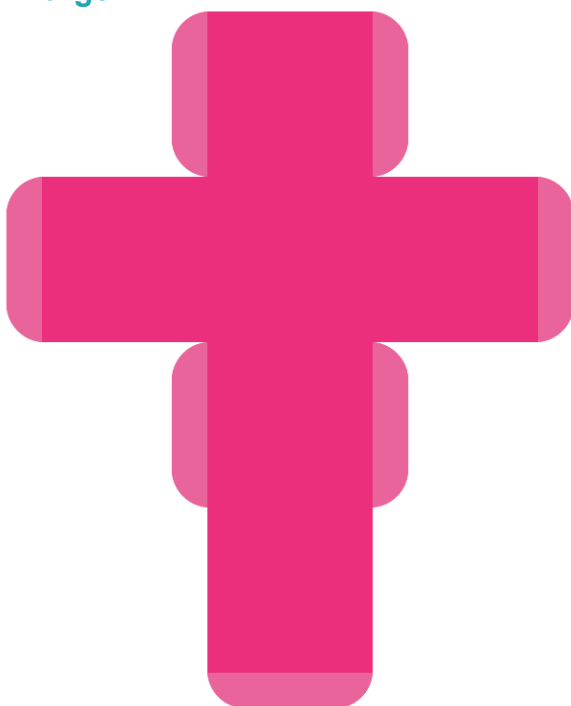
XL



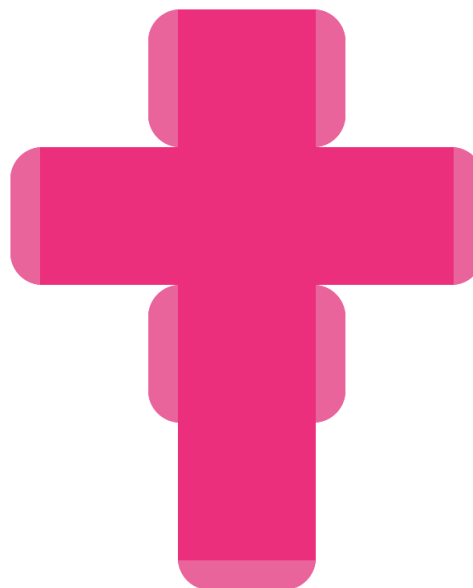
Small



Large



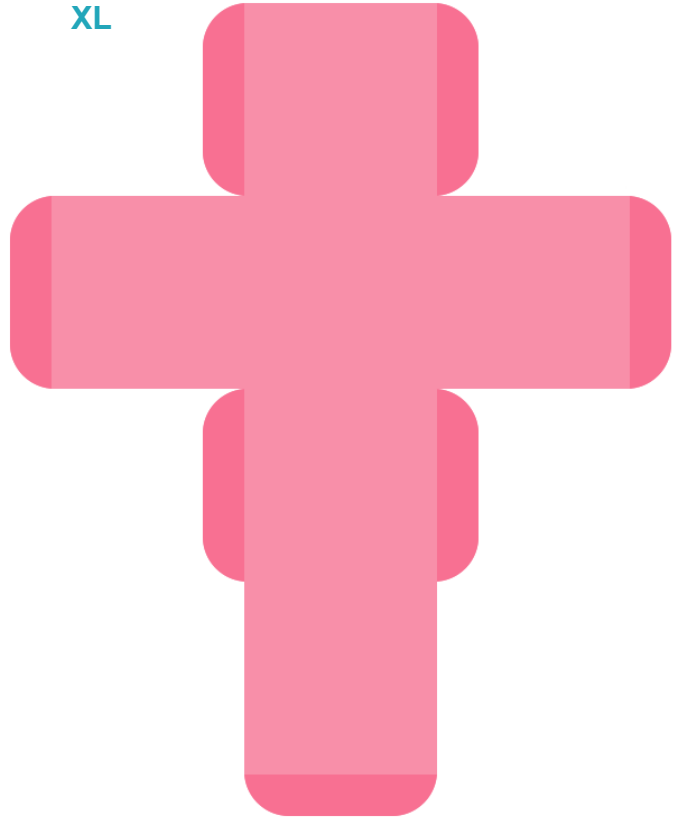
Medium



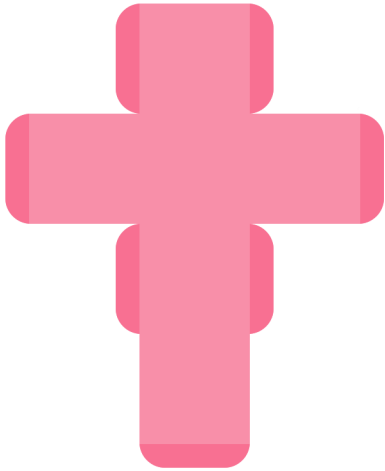
Square Box with Top Flap - Plain Mid Pink



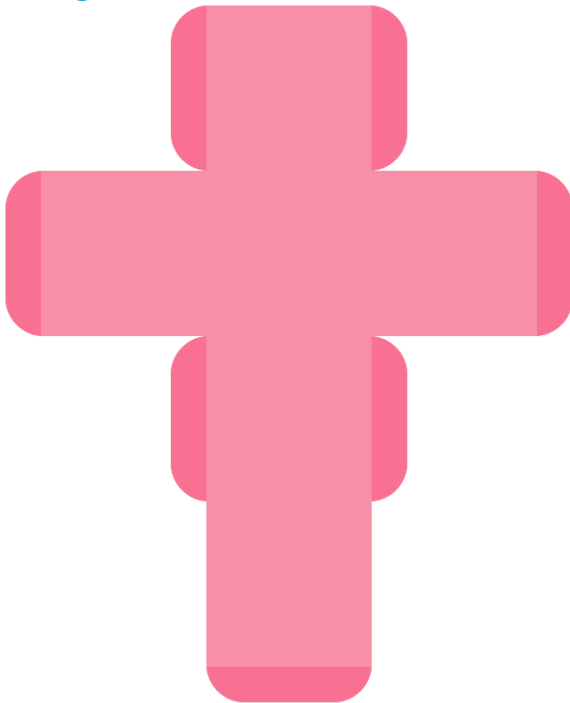
XL



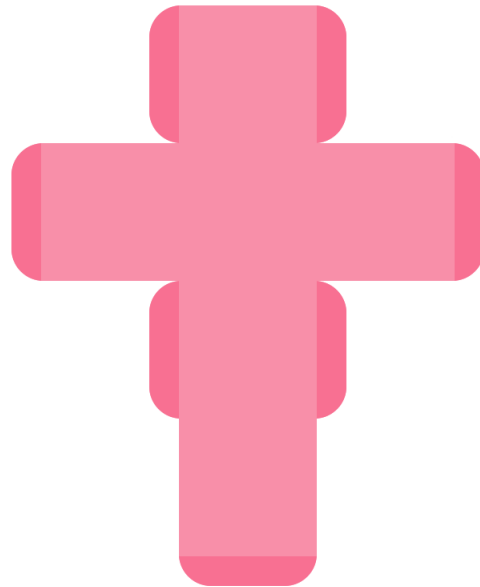
Small



Large



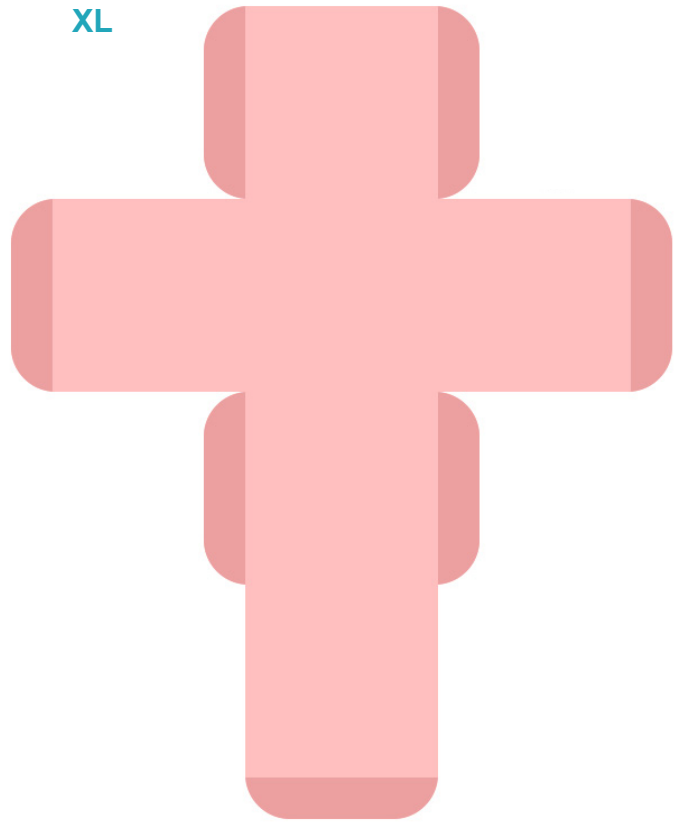
Medium



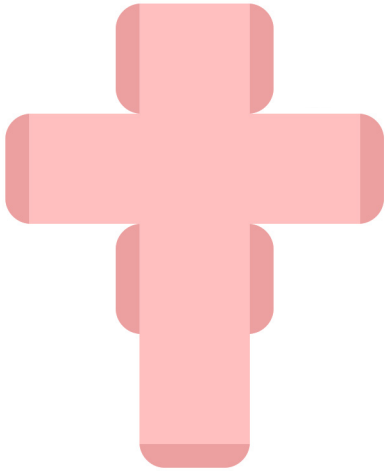
Square Box with Top Flap - Plain Light Pink



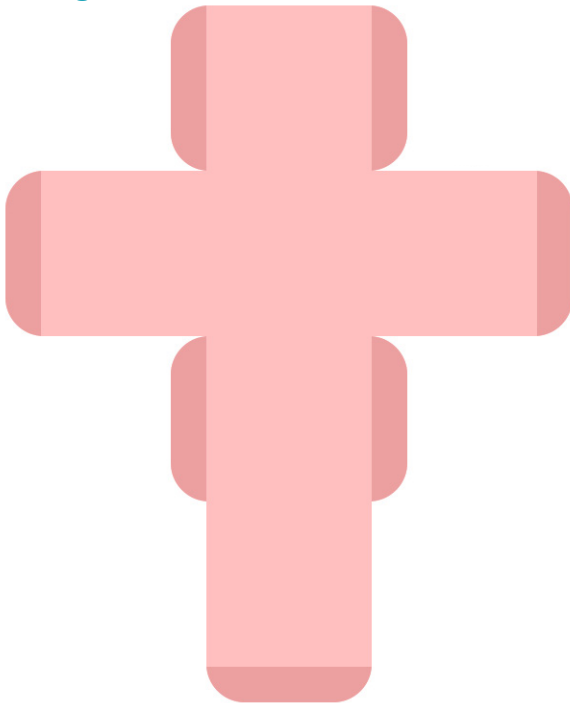
XL



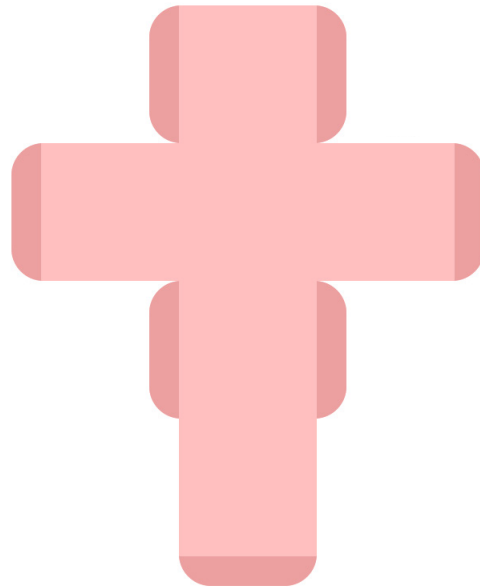
Small

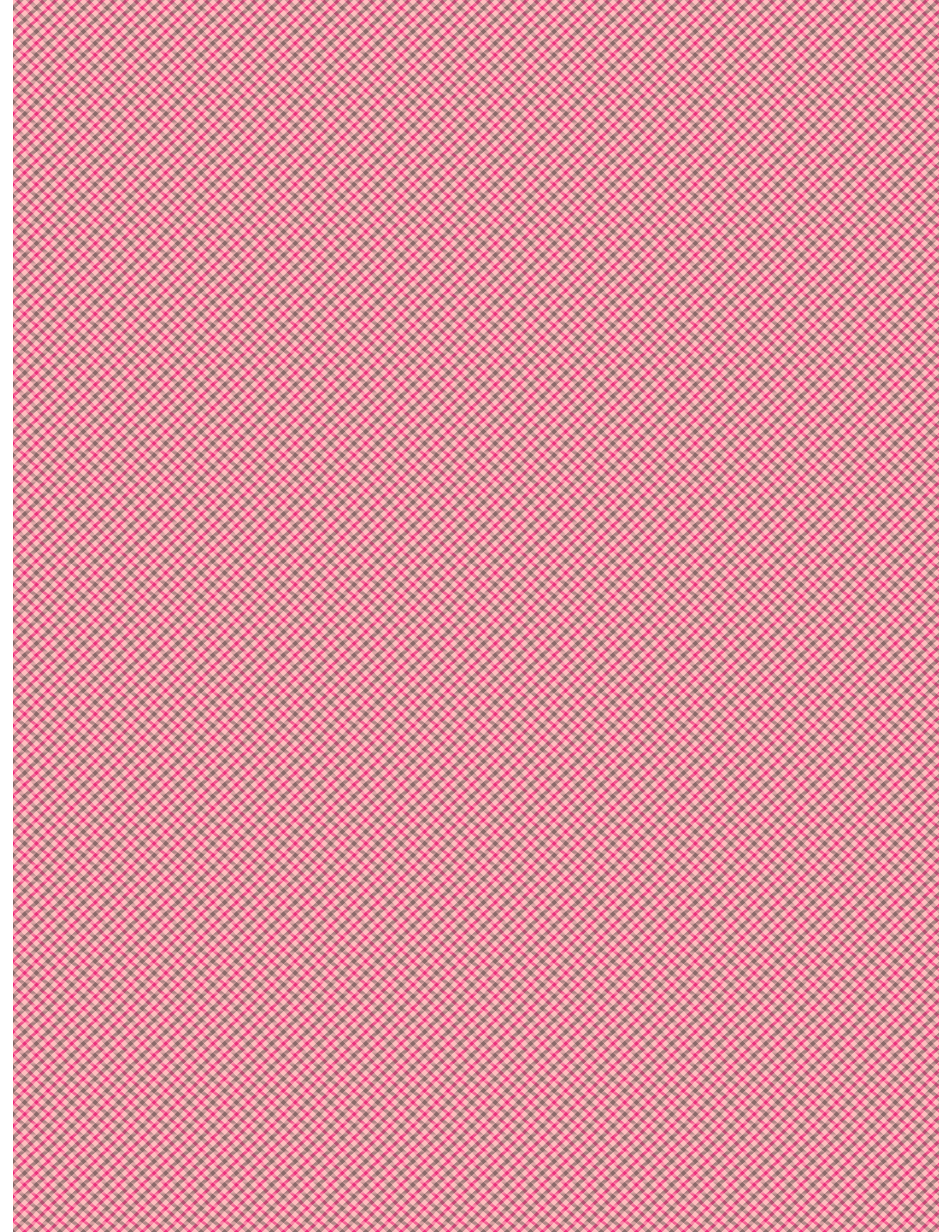


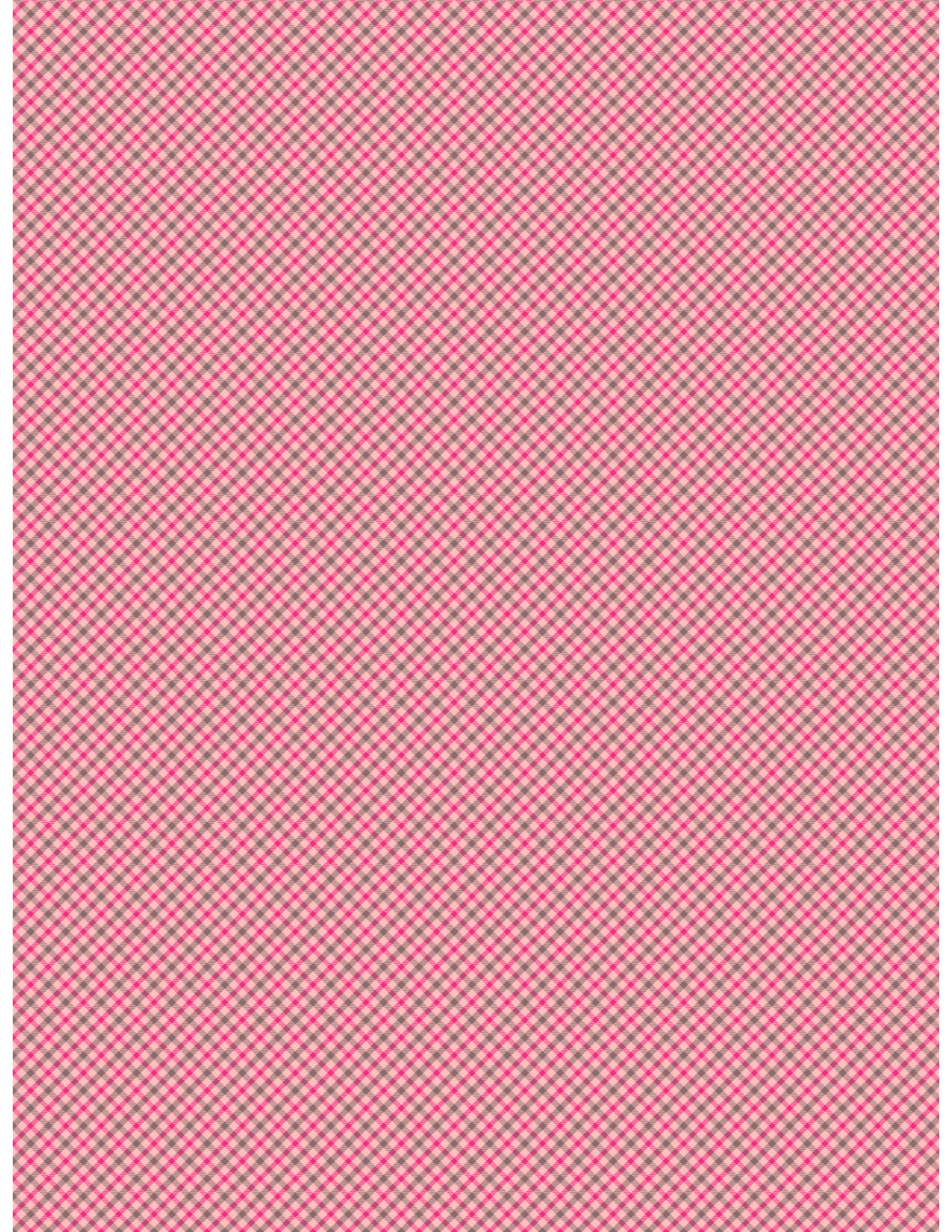
Large



Medium







the 1990s, the number of people in the UK who are aged 65 and over has increased from 10.5 million to 13.5 million, and the number of people aged 75 and over has increased from 4.5 million to 6.5 million (Office for National Statistics 2000). The number of people aged 65 and over is projected to increase to 16.5 million by 2020, and the number of people aged 75 and over to 8.5 million (Office for National Statistics 2000).

There is a growing awareness of the need to address the health care needs of the elderly population. The Department of Health (2000) has set out a strategy for the NHS to meet the needs of the elderly population. The strategy is based on the following principles: (1) to ensure that the elderly population has access to the services they need; (2) to ensure that the services are of high quality; (3) to ensure that the services are cost-effective; and (4) to ensure that the services are sustainable.

The strategy is based on the following principles: (1) to ensure that the elderly population has access to the services they need; (2) to ensure that the services are of high quality; (3) to ensure that the services are cost-effective; and (4) to ensure that the services are sustainable. The strategy is based on the following principles: (1) to ensure that the elderly population has access to the services they need; (2) to ensure that the services are of high quality; (3) to ensure that the services are cost-effective; and (4) to ensure that the services are sustainable.

The strategy is based on the following principles: (1) to ensure that the elderly population has access to the services they need; (2) to ensure that the services are of high quality; (3) to ensure that the services are cost-effective; and (4) to ensure that the services are sustainable. The strategy is based on the following principles: (1) to ensure that the elderly population has access to the services they need; (2) to ensure that the services are of high quality; (3) to ensure that the services are cost-effective; and (4) to ensure that the services are sustainable.

The strategy is based on the following principles: (1) to ensure that the elderly population has access to the services they need; (2) to ensure that the services are of high quality; (3) to ensure that the services are cost-effective; and (4) to ensure that the services are sustainable. The strategy is based on the following principles: (1) to ensure that the elderly population has access to the services they need; (2) to ensure that the services are of high quality; (3) to ensure that the services are cost-effective; and (4) to ensure that the services are sustainable.

The strategy is based on the following principles: (1) to ensure that the elderly population has access to the services they need; (2) to ensure that the services are of high quality; (3) to ensure that the services are cost-effective; and (4) to ensure that the services are sustainable. The strategy is based on the following principles: (1) to ensure that the elderly population has access to the services they need; (2) to ensure that the services are of high quality; (3) to ensure that the services are cost-effective; and (4) to ensure that the services are sustainable.

The strategy is based on the following principles: (1) to ensure that the elderly population has access to the services they need; (2) to ensure that the services are of high quality; (3) to ensure that the services are cost-effective; and (4) to ensure that the services are sustainable. The strategy is based on the following principles: (1) to ensure that the elderly population has access to the services they need; (2) to ensure that the services are of high quality; (3) to ensure that the services are cost-effective; and (4) to ensure that the services are sustainable.

The strategy is based on the following principles: (1) to ensure that the elderly population has access to the services they need; (2) to ensure that the services are of high quality; (3) to ensure that the services are cost-effective; and (4) to ensure that the services are sustainable. The strategy is based on the following principles: (1) to ensure that the elderly population has access to the services they need; (2) to ensure that the services are of high quality; (3) to ensure that the services are cost-effective; and (4) to ensure that the services are sustainable.

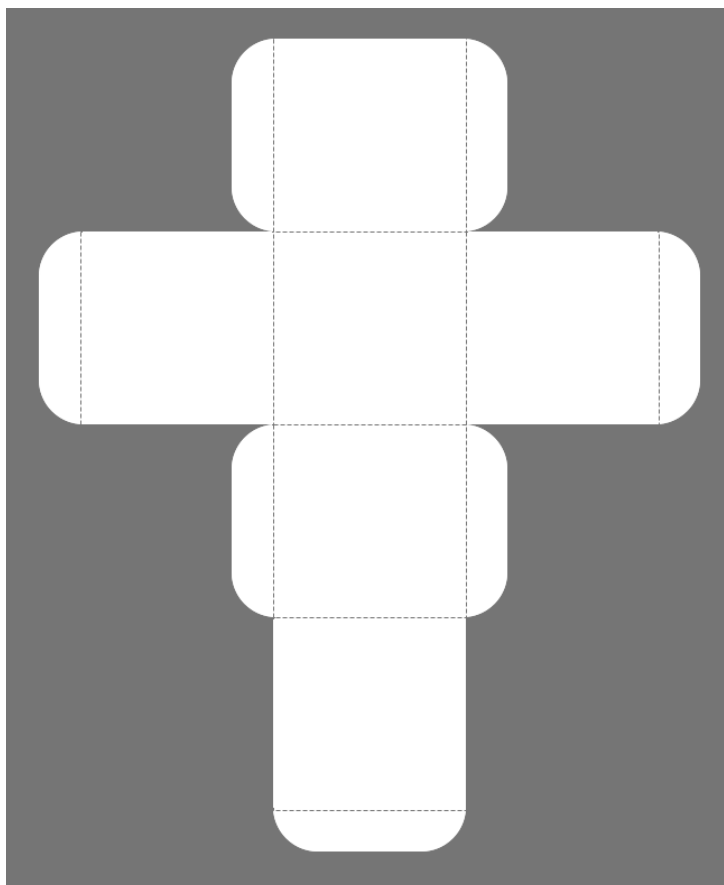
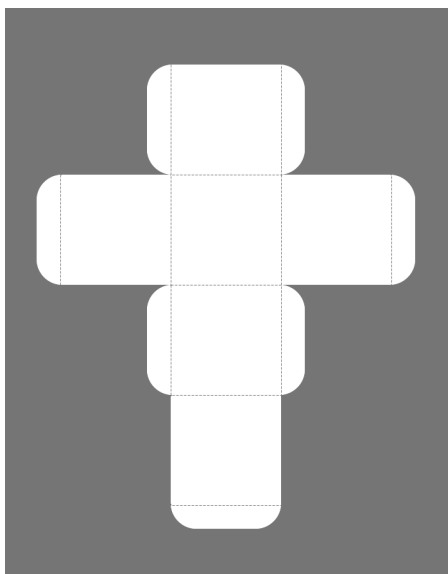
The strategy is based on the following principles: (1) to ensure that the elderly population has access to the services they need; (2) to ensure that the services are of high quality; (3) to ensure that the services are cost-effective; and (4) to ensure that the services are sustainable. The strategy is based on the following principles: (1) to ensure that the elderly population has access to the services they need; (2) to ensure that the services are of high quality; (3) to ensure that the services are cost-effective; and (4) to ensure that the services are sustainable.

Square Box with Top Flap Template with Fold Lines

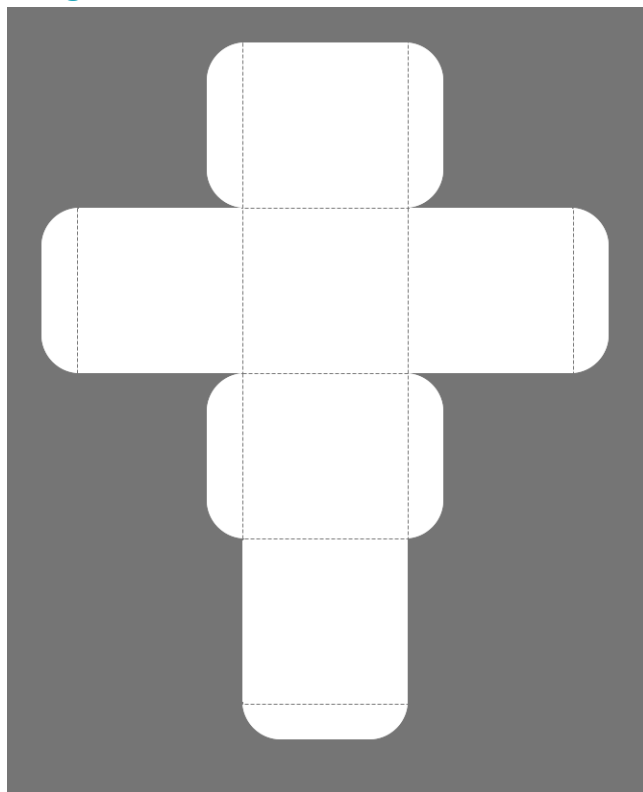


XL

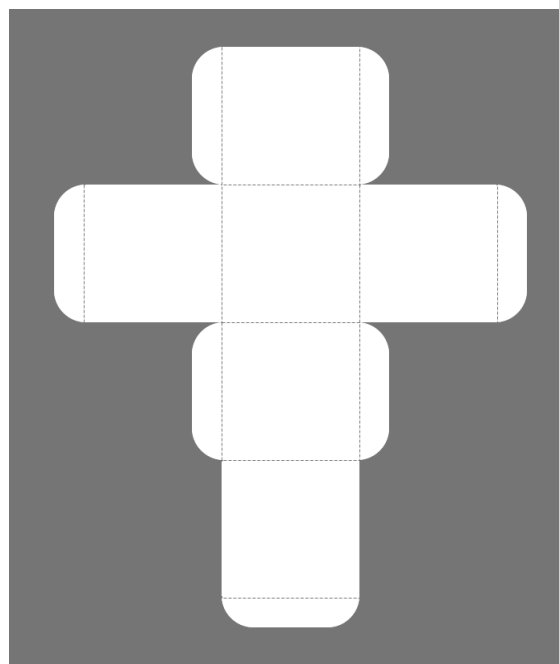
Small



Large



Medium



Visit sunidoll.com for more patterns and tutorials.

SUNI