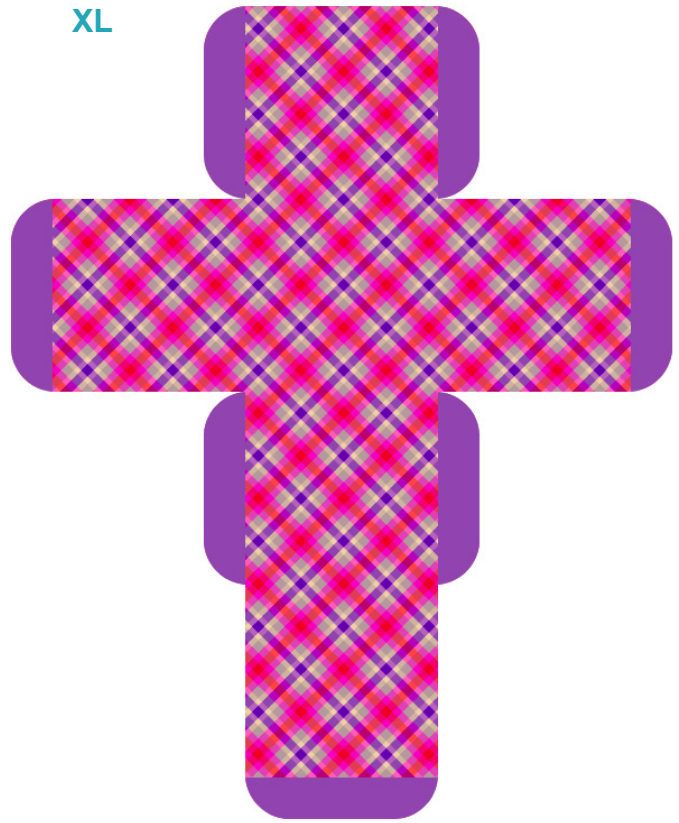


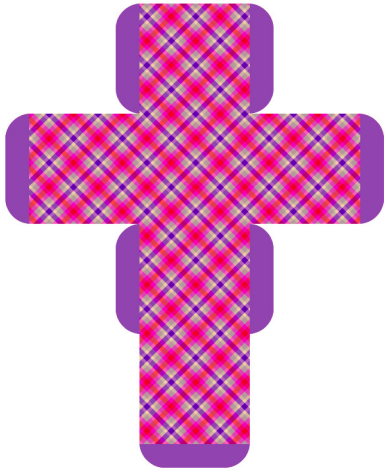
Square Box with Top Flap - Pattern 23



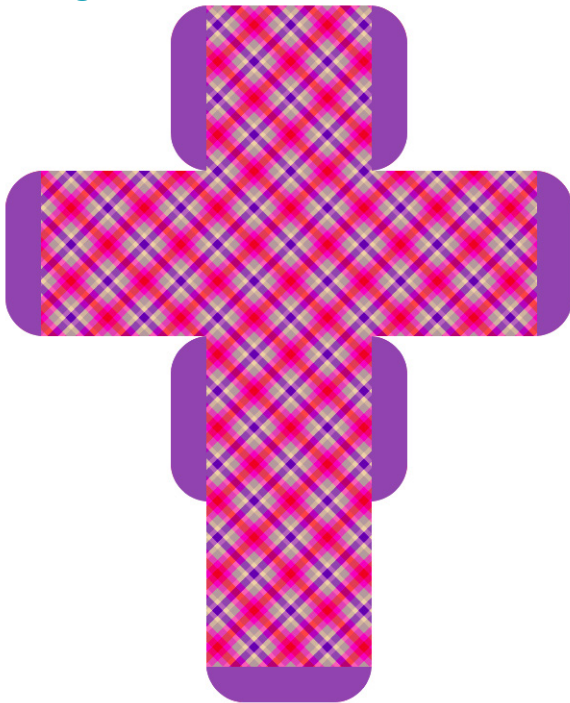
XL



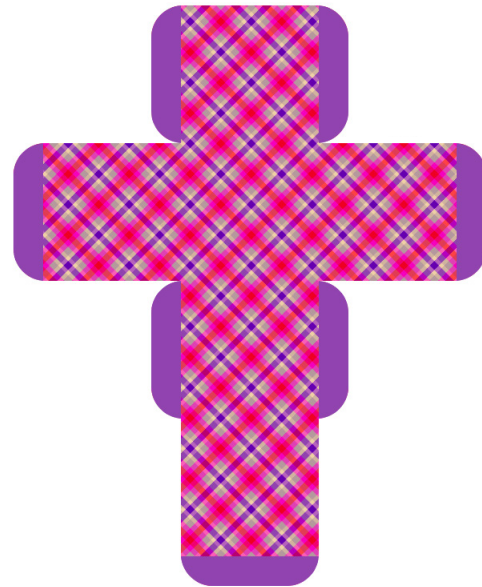
Small



Large



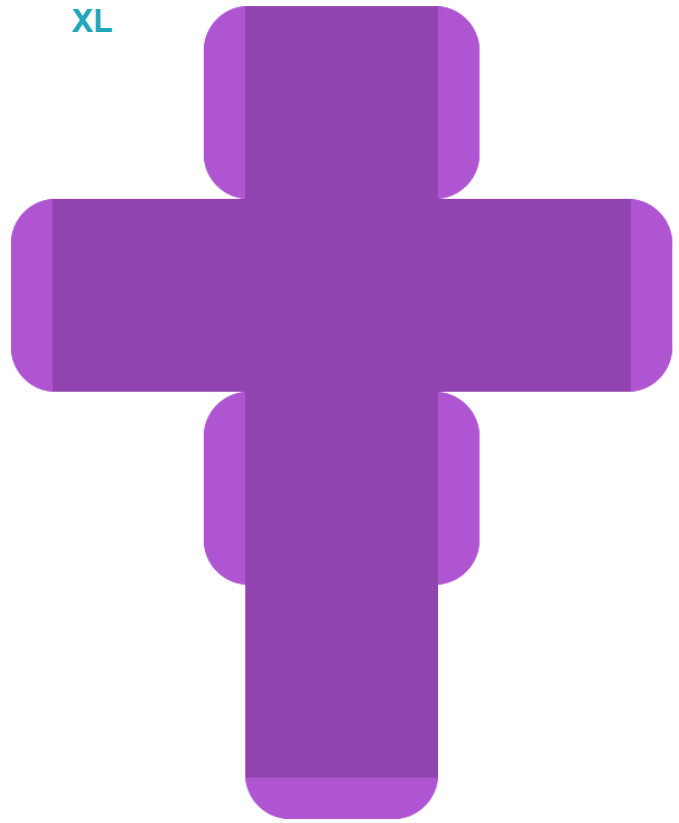
Medium



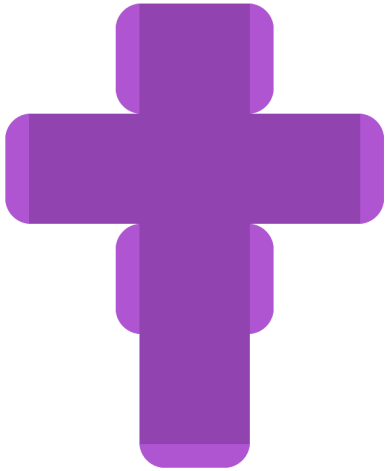
Square Box with Top Flap - Plain Purple



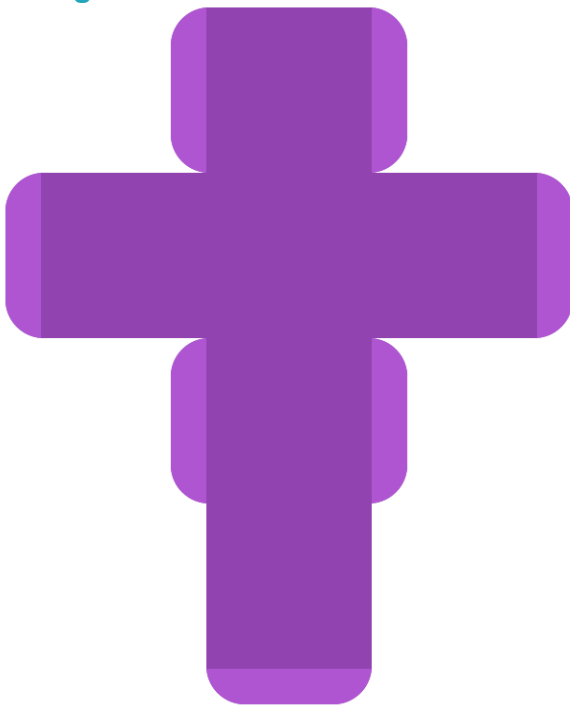
XL



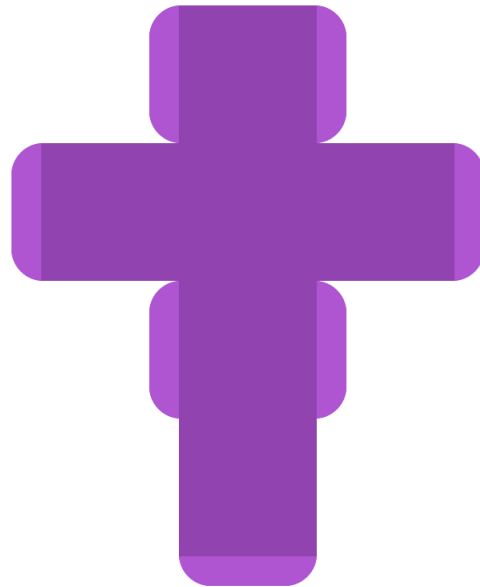
Small



Large



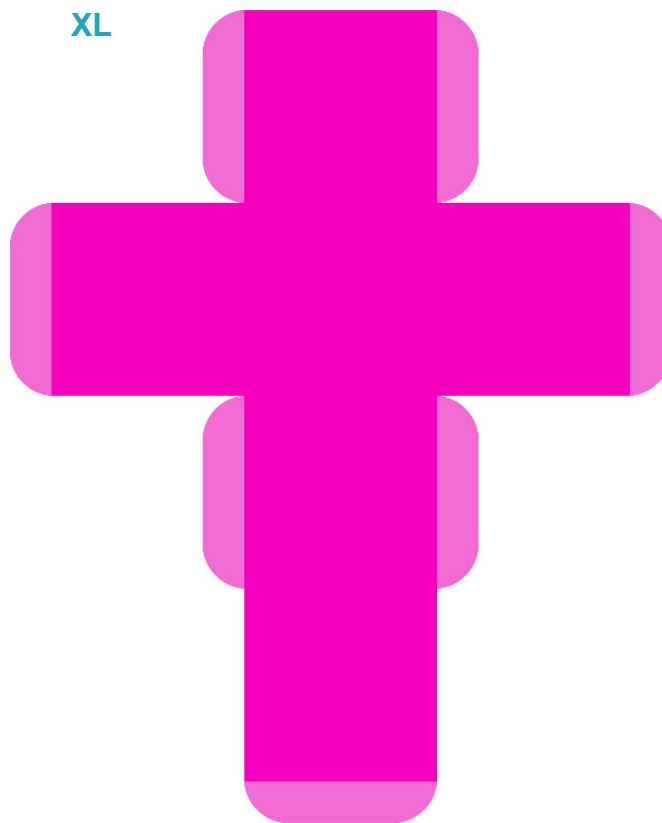
Medium



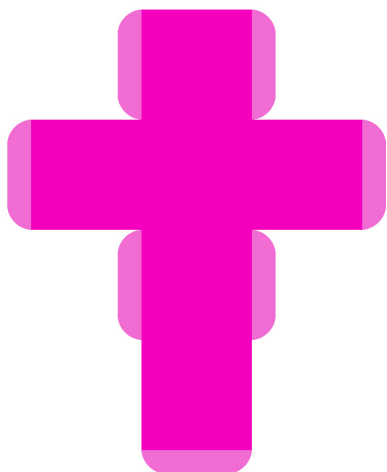
Square Box with Top Flap - Plain Pink



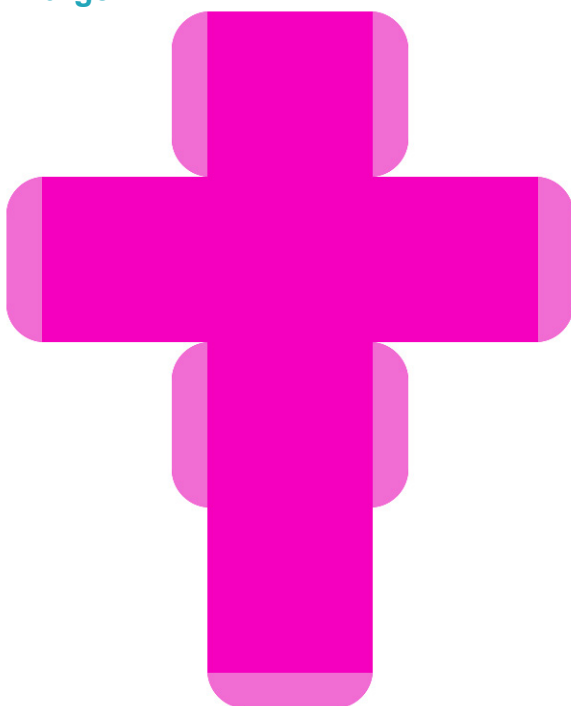
XL



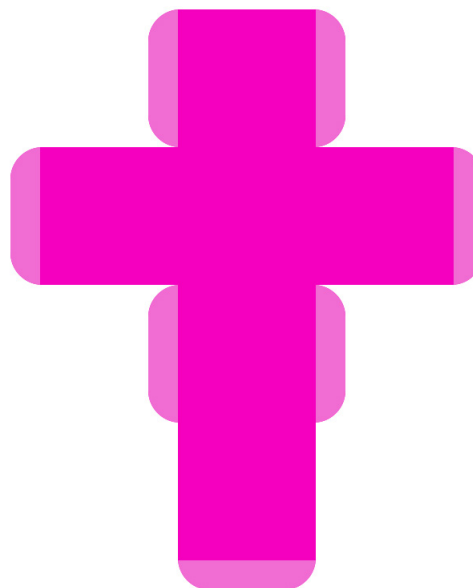
Small



Large



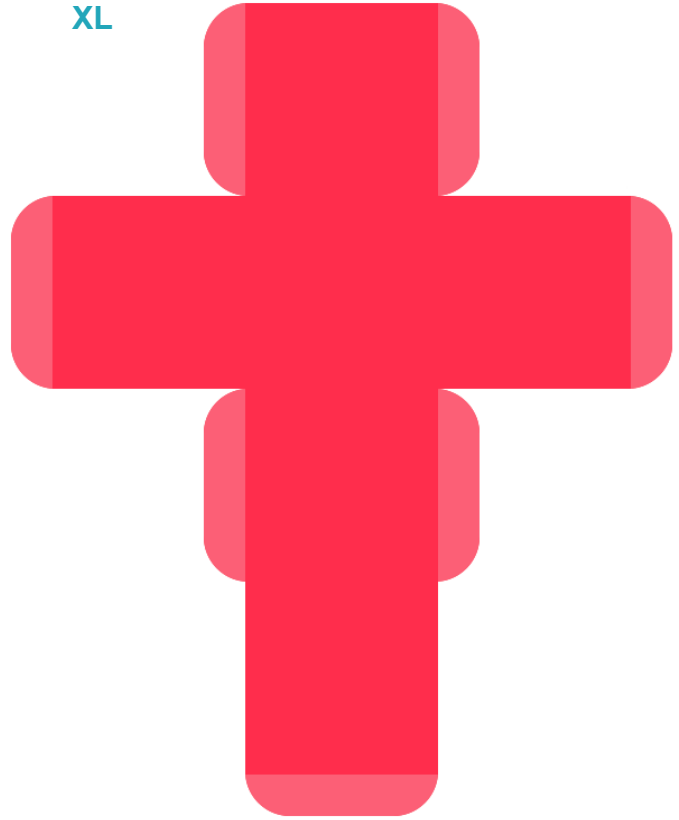
Medium



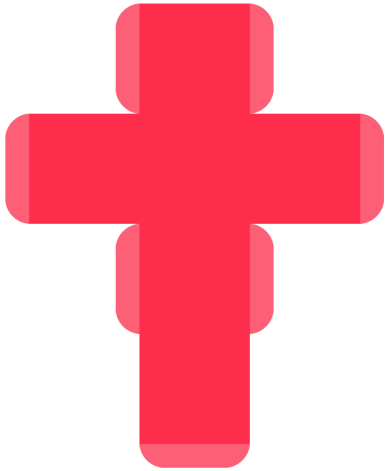
Square Box with Top Flap - Plain Orange



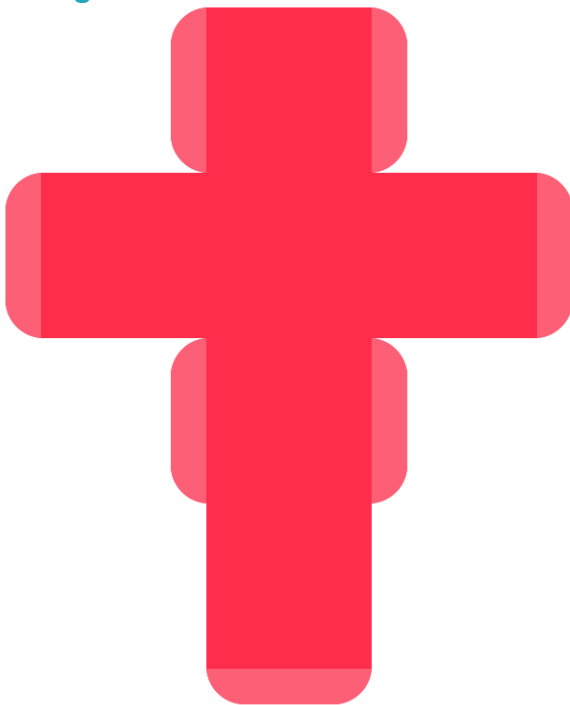
XL



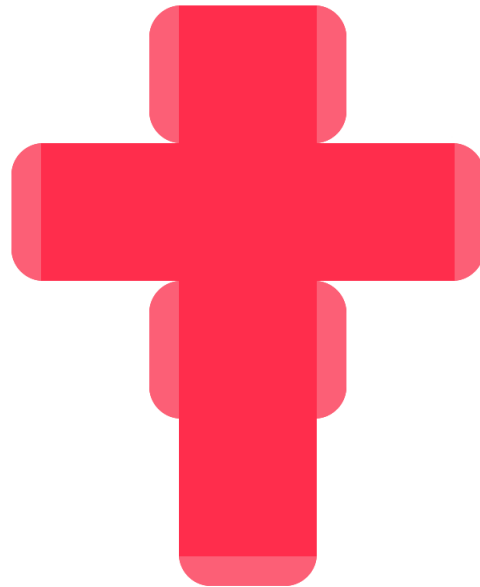
Small

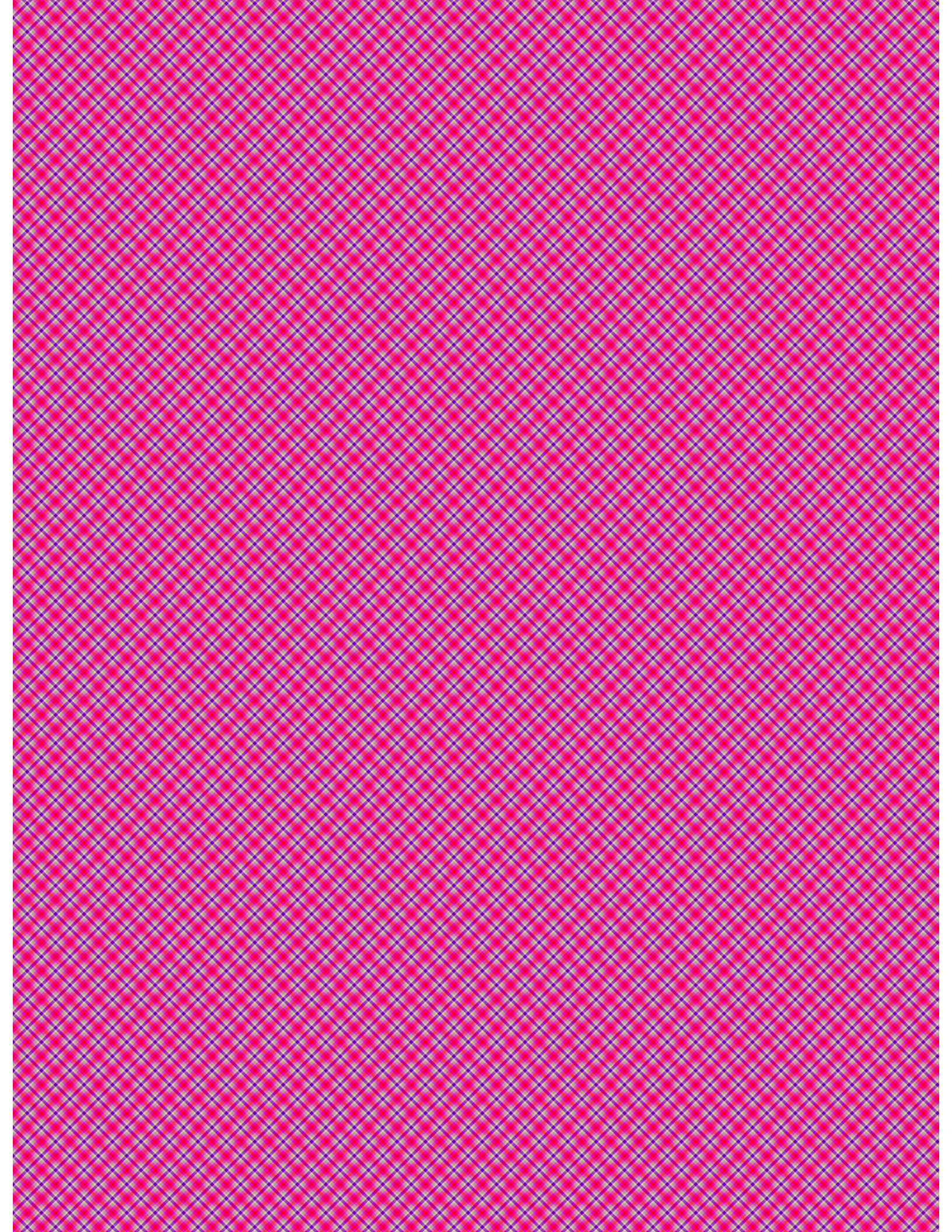


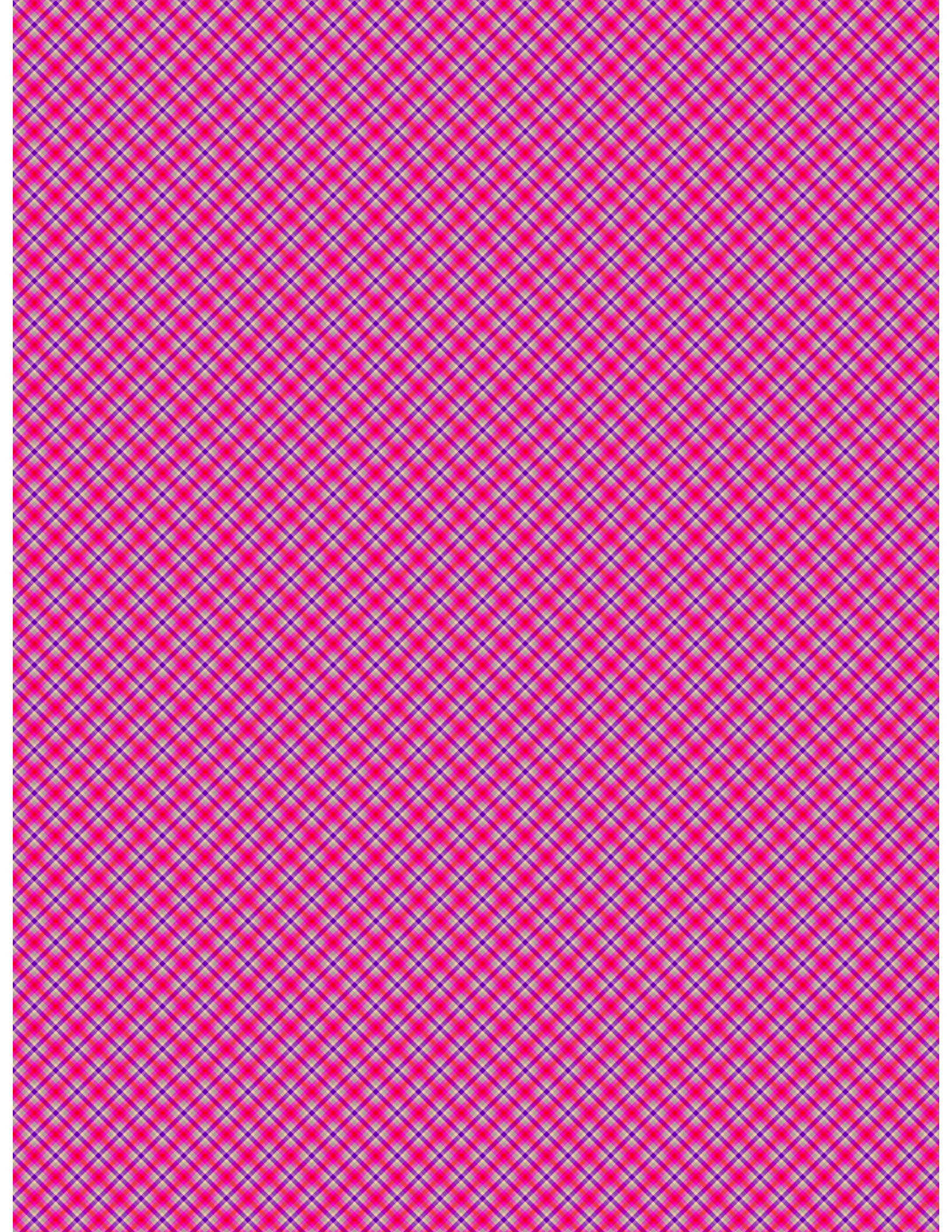
Large



Medium







the 1990s, the number of people in the UK who are employed in the public sector has increased from 1.5 million to 2.5 million (16% of the population) (Department of Health 2000).

There are a number of reasons for this increase. One of the main reasons is the increasing demand for health care services. The population is ageing, and there is a growing number of people with chronic conditions such as diabetes, heart disease, and asthma. This has led to a corresponding increase in the number of people who are employed in the public sector to provide these services.

Another reason for the increase is the expansion of the public sector. The government has invested heavily in the health care system, and this has led to the creation of new jobs in the public sector.

Finally, the public sector has become a more attractive employer. The public sector offers a number of benefits that are not available in the private sector, such as job security, a pension scheme, and a generous sick leave policy.

As a result of these factors, the public sector has become a major employer in the UK. This has led to a number of challenges for the public sector, such as the need to manage a large and diverse workforce.

One of the main challenges is the need to manage a large and diverse workforce. The public sector employs people from a wide range of backgrounds and with a variety of skills and experiences.

Another challenge is the need to manage a large and diverse workforce. The public sector employs people from a wide range of backgrounds and with a variety of skills and experiences.

Finally, the public sector has become a major employer in the UK. This has led to a number of challenges for the public sector, such as the need to manage a large and diverse workforce.

One of the main challenges is the need to manage a large and diverse workforce. The public sector employs people from a wide range of backgrounds and with a variety of skills and experiences.

Another challenge is the need to manage a large and diverse workforce. The public sector employs people from a wide range of backgrounds and with a variety of skills and experiences.

Finally, the public sector has become a major employer in the UK. This has led to a number of challenges for the public sector, such as the need to manage a large and diverse workforce.

One of the main challenges is the need to manage a large and diverse workforce. The public sector employs people from a wide range of backgrounds and with a variety of skills and experiences.

Another challenge is the need to manage a large and diverse workforce. The public sector employs people from a wide range of backgrounds and with a variety of skills and experiences.

Finally, the public sector has become a major employer in the UK. This has led to a number of challenges for the public sector, such as the need to manage a large and diverse workforce.

One of the main challenges is the need to manage a large and diverse workforce. The public sector employs people from a wide range of backgrounds and with a variety of skills and experiences.

Another challenge is the need to manage a large and diverse workforce. The public sector employs people from a wide range of backgrounds and with a variety of skills and experiences.

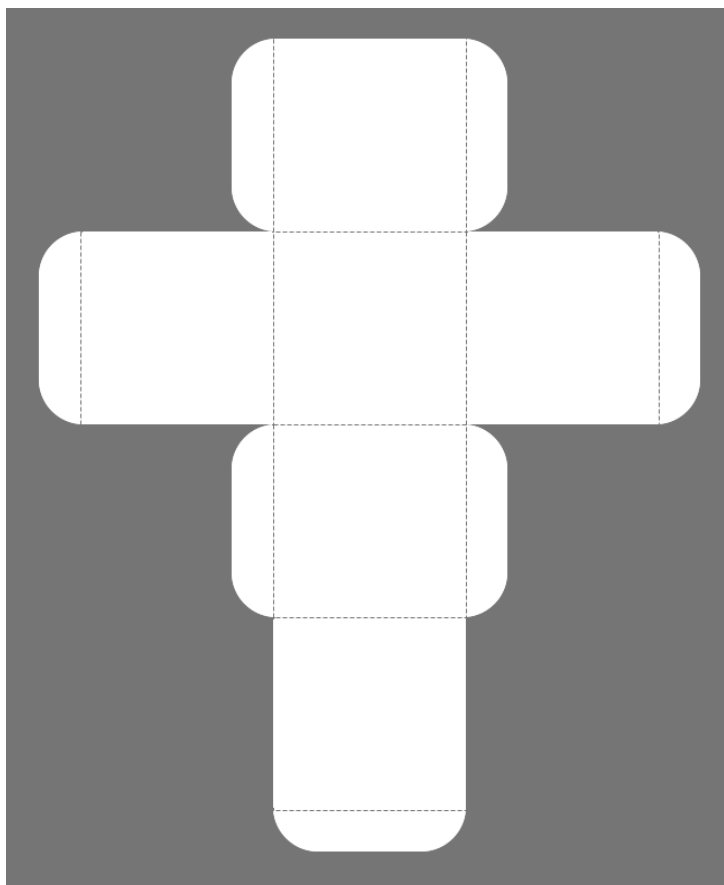
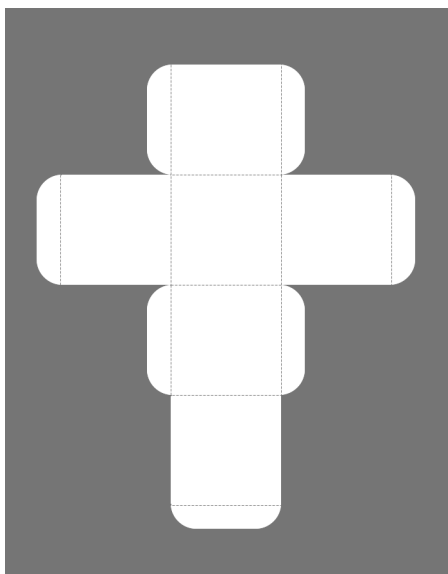
Finally, the public sector has become a major employer in the UK. This has led to a number of challenges for the public sector, such as the need to manage a large and diverse workforce.

Square Box with Top Flap Template with Fold Lines

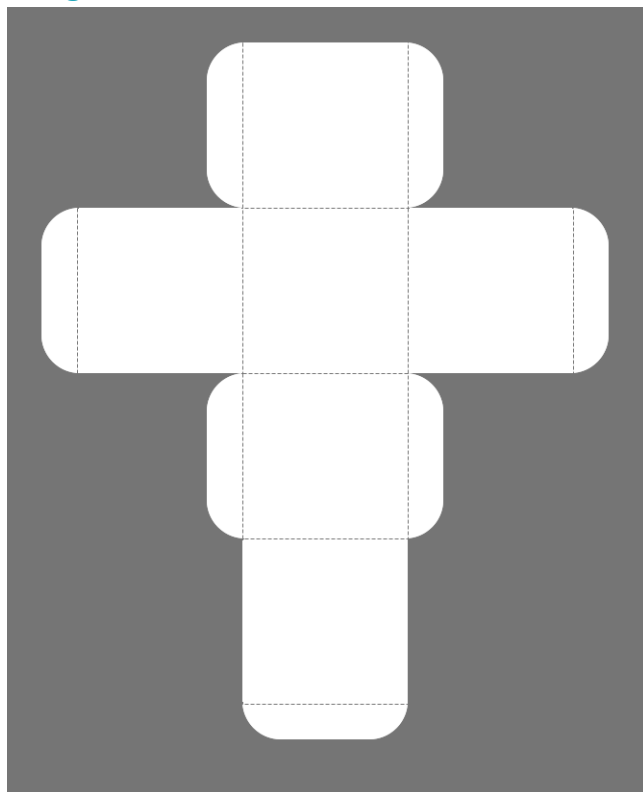


XL

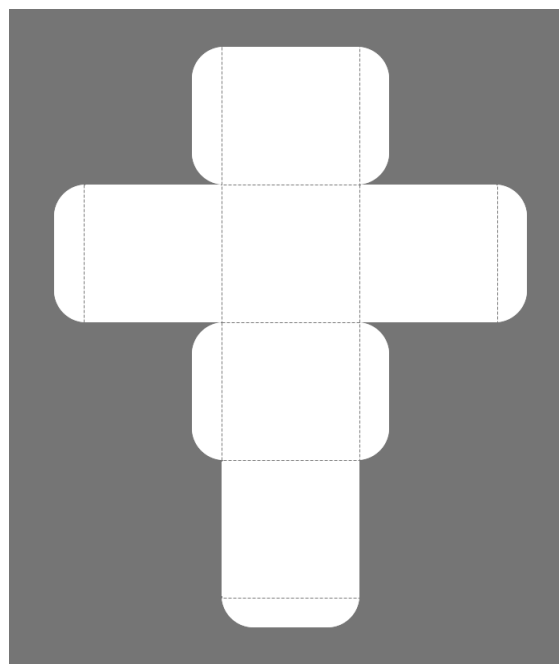
Small



Large



Medium



Visit sunidoll.com for more patterns and tutorials.

SUNI