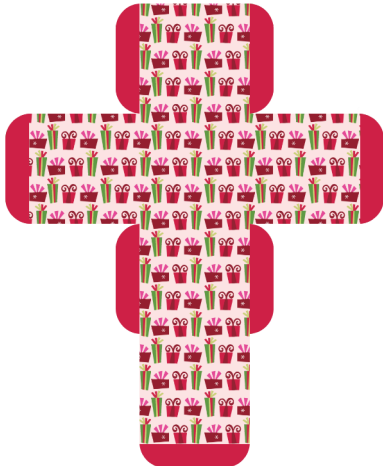


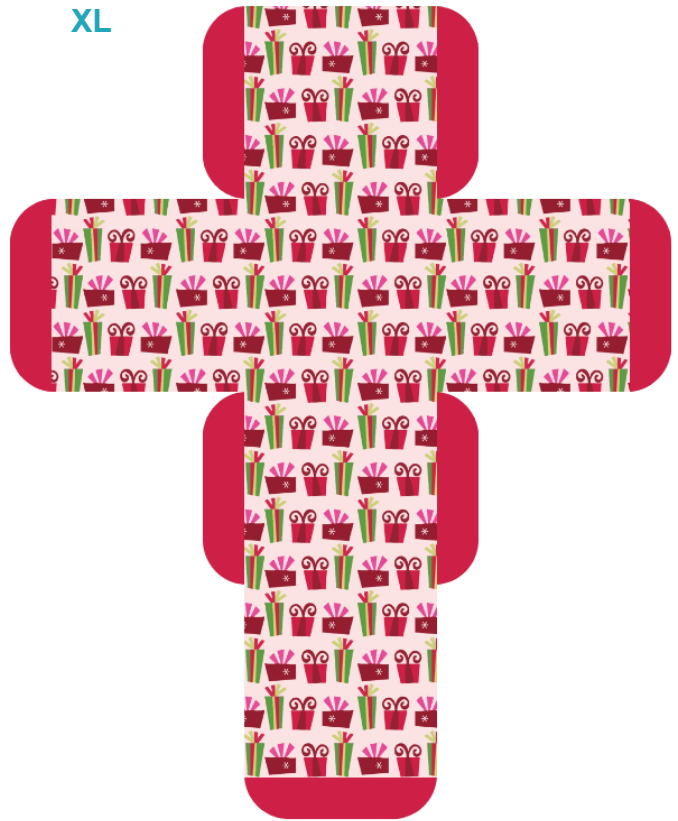
Square Box with Top Flap - Pattern 2



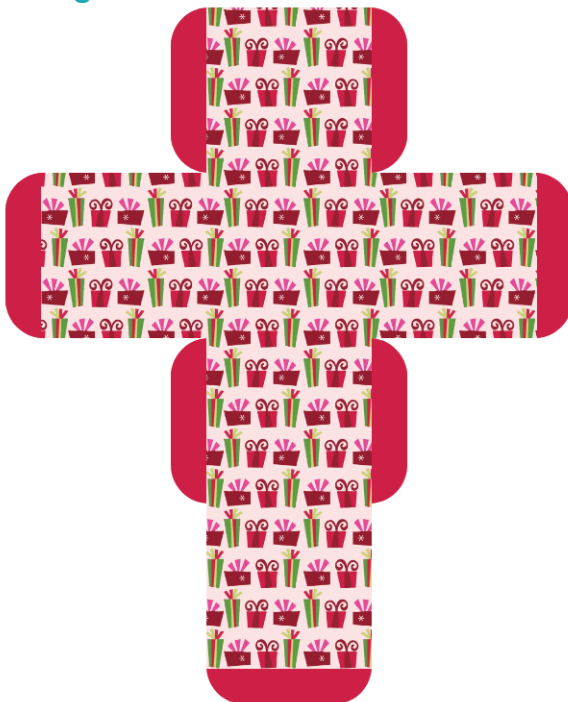
Small



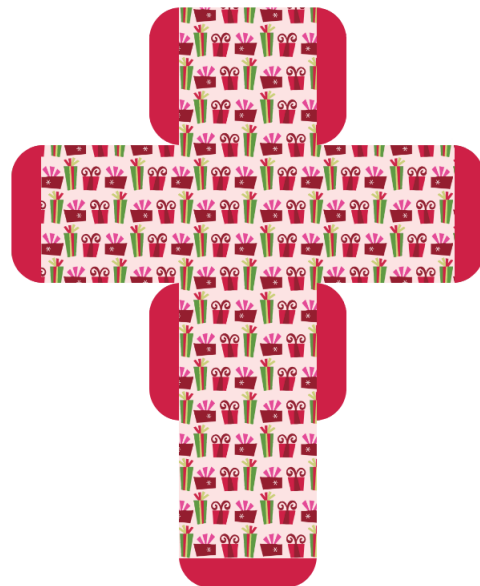
XL



Large



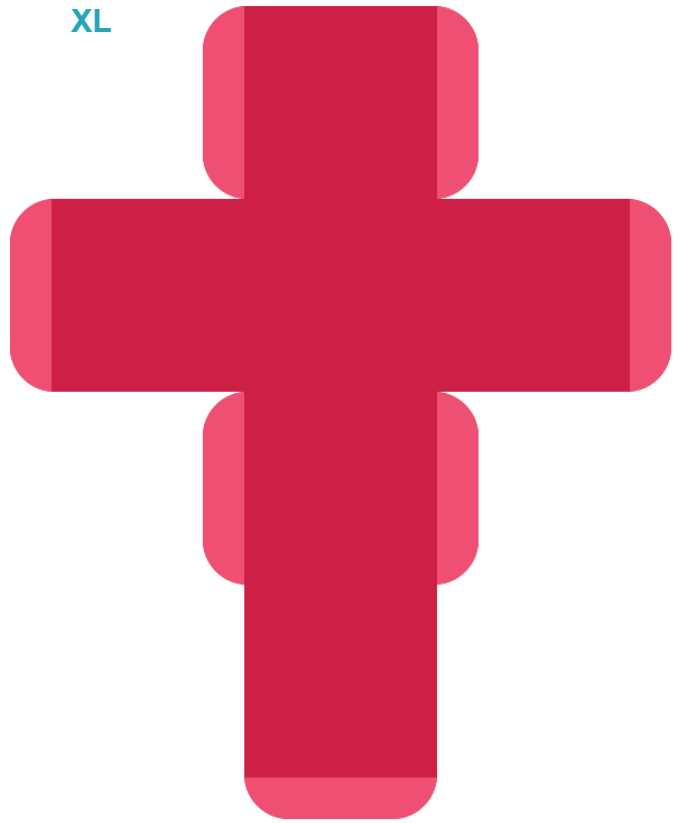
Medium



Square Box with Top Flap - Plain Red



XL



Small



Large



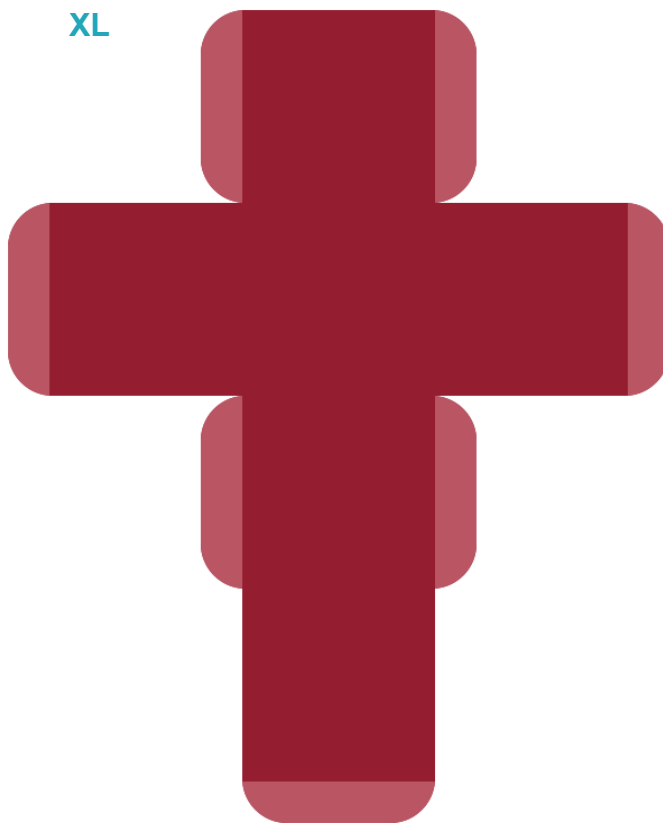
Medium



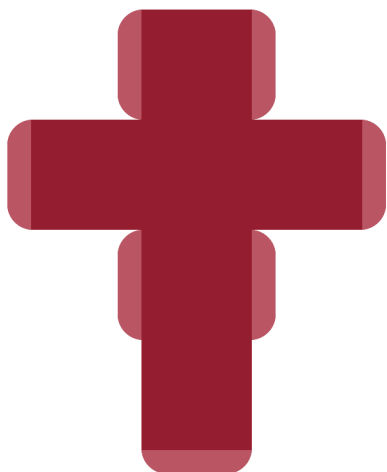
Square Box with Top Flap - Plain Plum



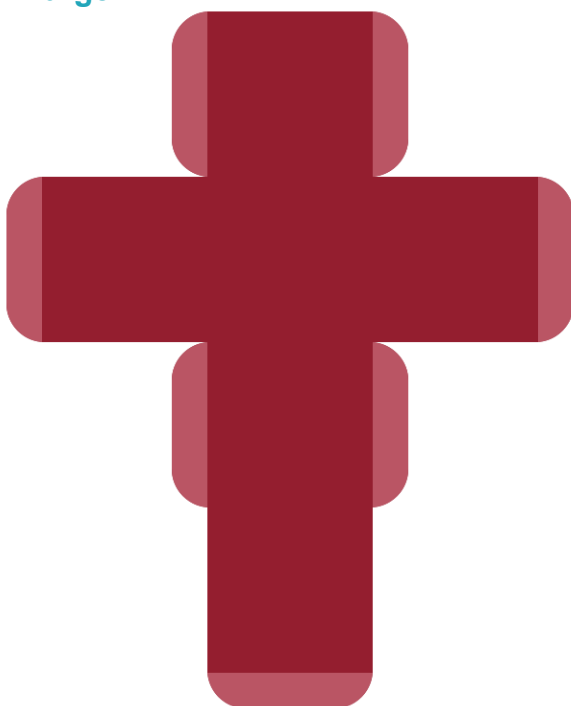
XL



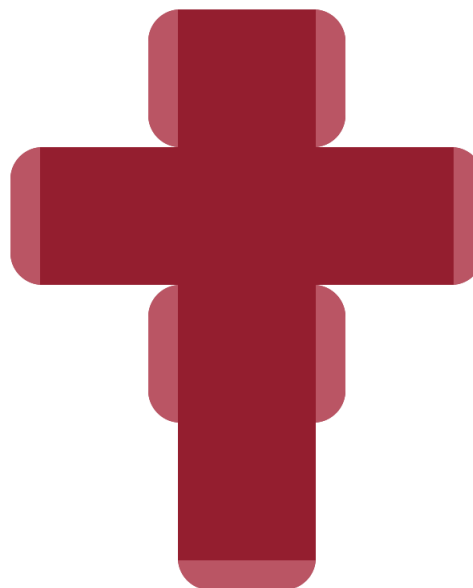
Small



Large



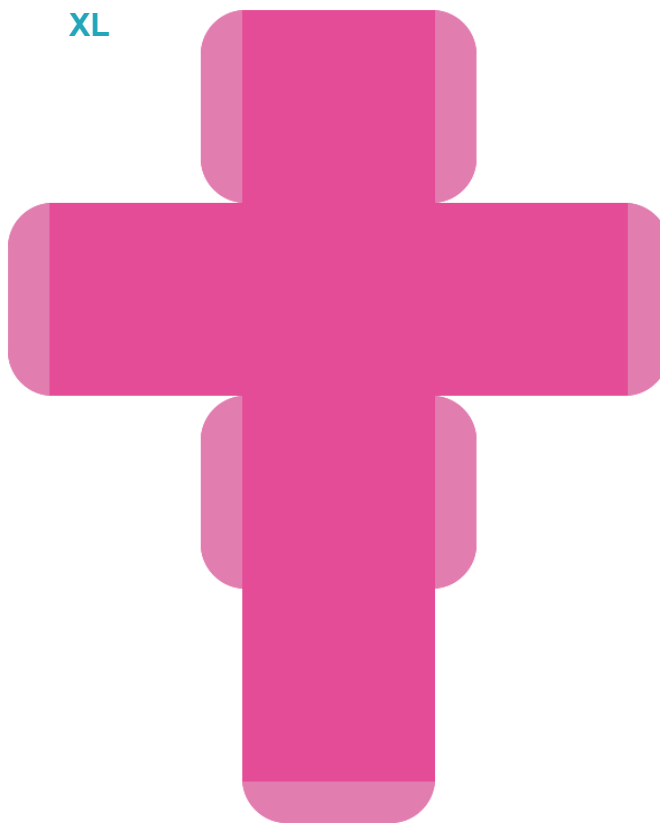
Medium



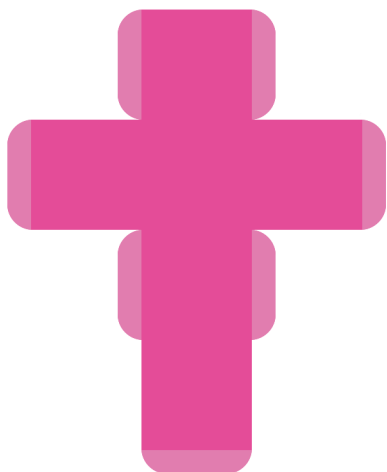
Square Box with Top Flap - Plain Pink



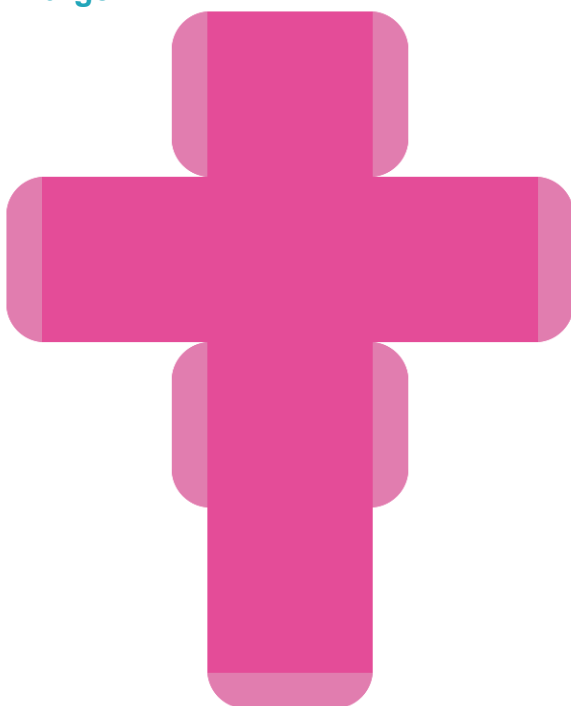
XL



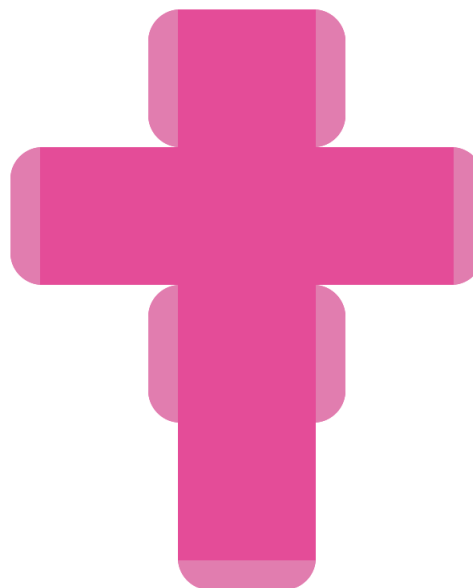
Small



Large



Medium



Square Box with Top Flap - Plain Green



Small



XL

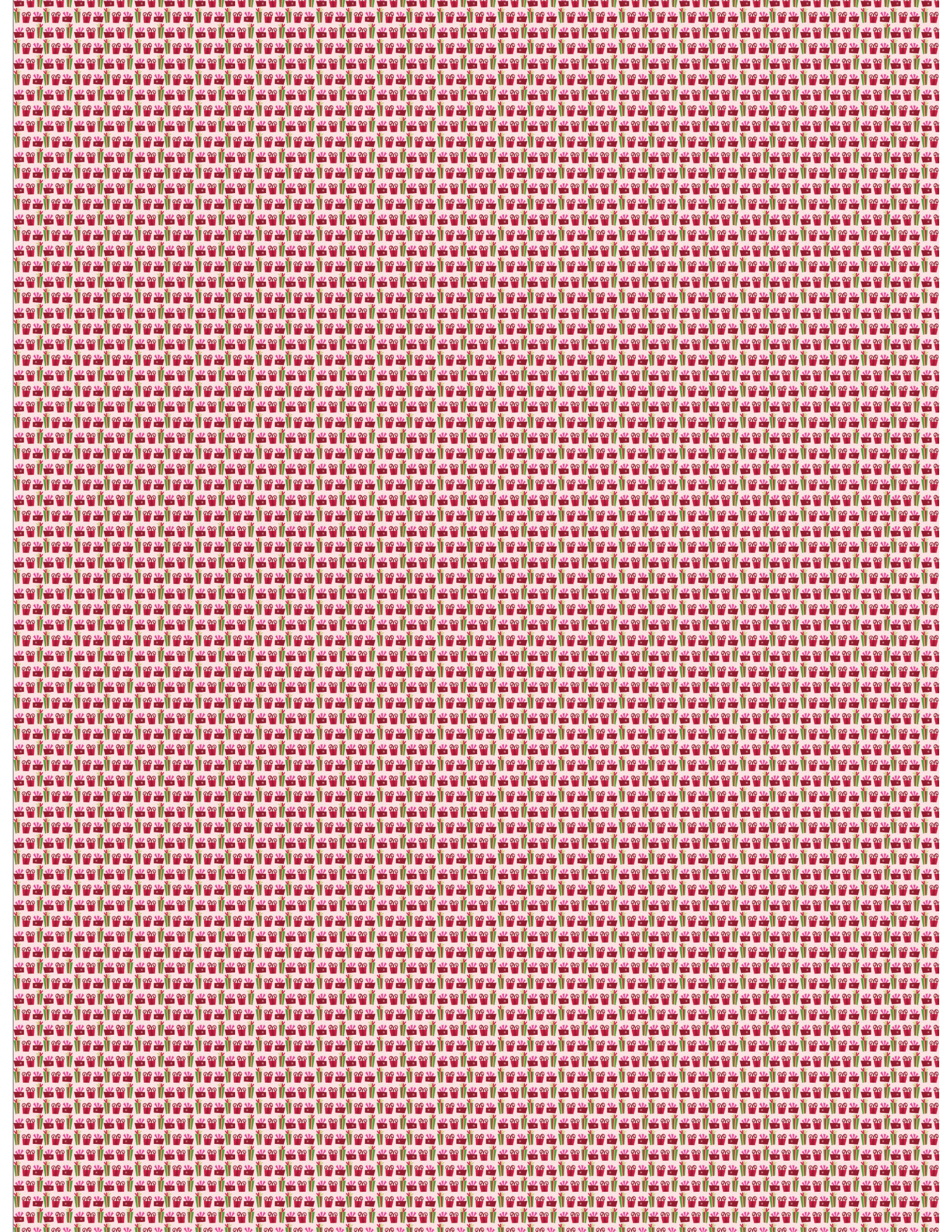


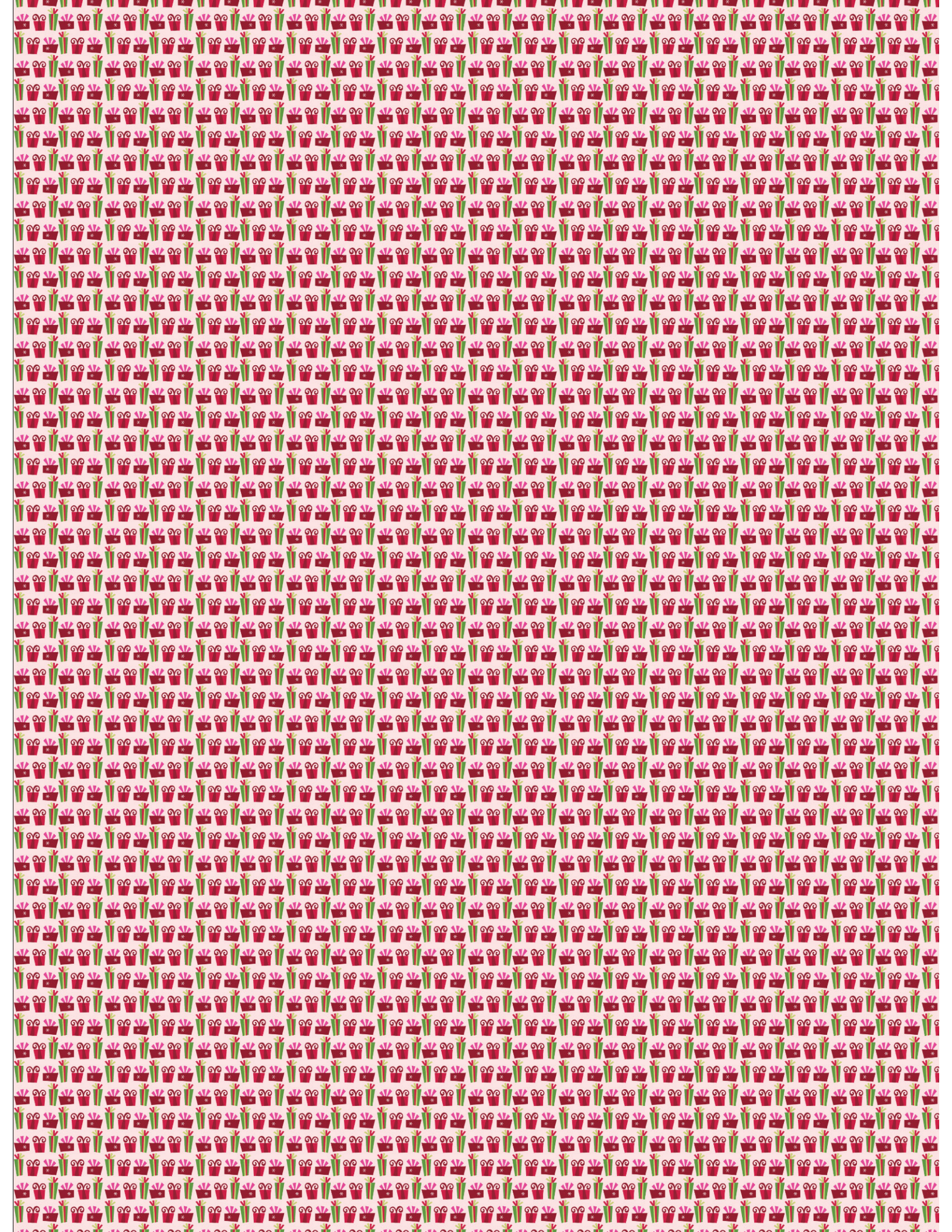
Large



Medium







the same time, the fact that the two countries have similar political systems and a similar history of colonialism may have influenced the results.

There are a number of limitations to the current study. First, the sample size is small and the data are cross-sectional.

Second, the data are self-reported and may be subject to common method variance.

Third, the study only examined the relationship between the two variables and did not explore the underlying mechanisms.

Fourth, the study did not control for other variables that may influence the relationship.

Fifth, the study did not explore the relationship between the two variables in different cultural contexts.

Sixth, the study did not explore the relationship between the two variables in different organizational settings.

Seventh, the study did not explore the relationship between the two variables in different industries.

Eighth, the study did not explore the relationship between the two variables in different countries.

Ninth, the study did not explore the relationship between the two variables in different organizations.

Tenth, the study did not explore the relationship between the two variables in different departments.

Eleventh, the study did not explore the relationship between the two variables in different teams.

Twelfth, the study did not explore the relationship between the two variables in different individuals.

Thirteenth, the study did not explore the relationship between the two variables in different situations.

Fourteenth, the study did not explore the relationship between the two variables in different environments.

Fifteenth, the study did not explore the relationship between the two variables in different contexts.

Sixteenth, the study did not explore the relationship between the two variables in different settings.

Seventeenth, the study did not explore the relationship between the two variables in different industries.

Eighteenth, the study did not explore the relationship between the two variables in different countries.

Nineteenth, the study did not explore the relationship between the two variables in different organizations.

Twentieth, the study did not explore the relationship between the two variables in different departments.

Twenty-first, the study did not explore the relationship between the two variables in different teams.

Twenty-second, the study did not explore the relationship between the two variables in different individuals.

Twenty-third, the study did not explore the relationship between the two variables in different situations.

Twenty-fourth, the study did not explore the relationship between the two variables in different environments.

Twenty-fifth, the study did not explore the relationship between the two variables in different contexts.

...the first time I had ever seen a man who was so beautiful. He was tall and thin, with long, dark hair and a beard. He was wearing a simple, dark tunic and a long, dark cloak. He looked like a man of power and authority, but also like a man who was kind and gentle. I had never seen anyone like him before. He was the first man I had ever loved.

...the first time I had ever seen a man who was so beautiful. He was tall and thin, with long, dark hair and a beard. He was wearing a simple, dark tunic and a long, dark cloak. He looked like a man of power and authority, but also like a man who was kind and gentle. I had never seen anyone like him before. He was the first man I had ever loved.

...the first time I had ever seen a man who was so beautiful. He was tall and thin, with long, dark hair and a beard. He was wearing a simple, dark tunic and a long, dark cloak. He looked like a man of power and authority, but also like a man who was kind and gentle. I had never seen anyone like him before. He was the first man I had ever loved.

...the first time I had ever seen a man who was so beautiful. He was tall and thin, with long, dark hair and a beard. He was wearing a simple, dark tunic and a long, dark cloak. He looked like a man of power and authority, but also like a man who was kind and gentle. I had never seen anyone like him before. He was the first man I had ever loved.

...the first time I had ever seen a man who was so beautiful. He was tall and thin, with long, dark hair and a beard. He was wearing a simple, dark tunic and a long, dark cloak. He looked like a man of power and authority, but also like a man who was kind and gentle. I had never seen anyone like him before. He was the first man I had ever loved.

the fact that the two groups were not statistically different in terms of the number of children in the household.

It is interesting to note that the proportion of children who were not in school was higher for the control group than for the treatment group. This may be due to the fact that the control group was more likely to be from a rural area, where access to schools is more difficult.

The results of the regression analysis are presented in Table 4. The dependent variable is the number of children in the household. The independent variables are the control variables and the treatment variable. The control variables are the age of the head of household, the number of children in the household, and the number of children who are not in school.

The results show that the treatment variable has a positive and significant effect on the number of children in the household. This suggests that the intervention had a positive impact on the number of children in the household.

The control variables also have a positive and significant effect on the number of children in the household. This suggests that the number of children in the household is positively related to the age of the head of household, the number of children in the household, and the number of children who are not in school.

The results of the regression analysis are presented in Table 4. The dependent variable is the number of children in the household. The independent variables are the control variables and the treatment variable. The control variables are the age of the head of household, the number of children in the household, and the number of children who are not in school.

The results show that the treatment variable has a positive and significant effect on the number of children in the household. This suggests that the intervention had a positive impact on the number of children in the household.

The control variables also have a positive and significant effect on the number of children in the household. This suggests that the number of children in the household is positively related to the age of the head of household, the number of children in the household, and the number of children who are not in school.

The results of the regression analysis are presented in Table 4. The dependent variable is the number of children in the household. The independent variables are the control variables and the treatment variable. The control variables are the age of the head of household, the number of children in the household, and the number of children who are not in school.

The results show that the treatment variable has a positive and significant effect on the number of children in the household. This suggests that the intervention had a positive impact on the number of children in the household.

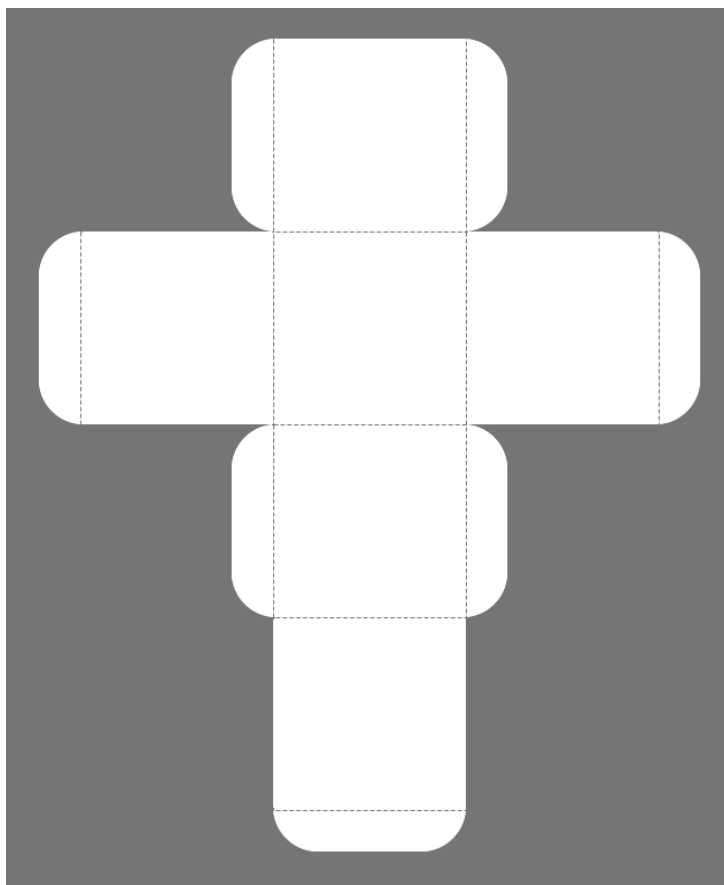
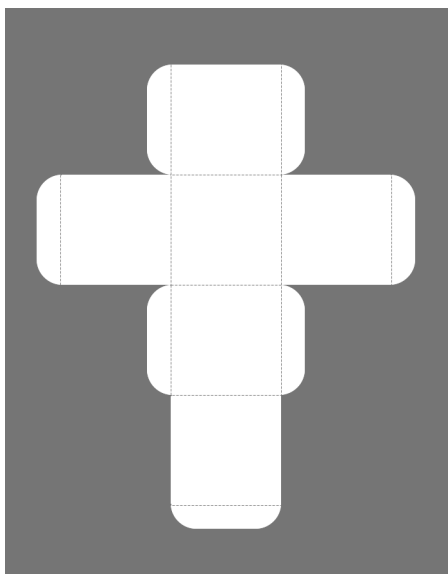
The control variables also have a positive and significant effect on the number of children in the household. This suggests that the number of children in the household is positively related to the age of the head of household, the number of children in the household, and the number of children who are not in school.

Square Box with Top Flap Template with Fold Lines

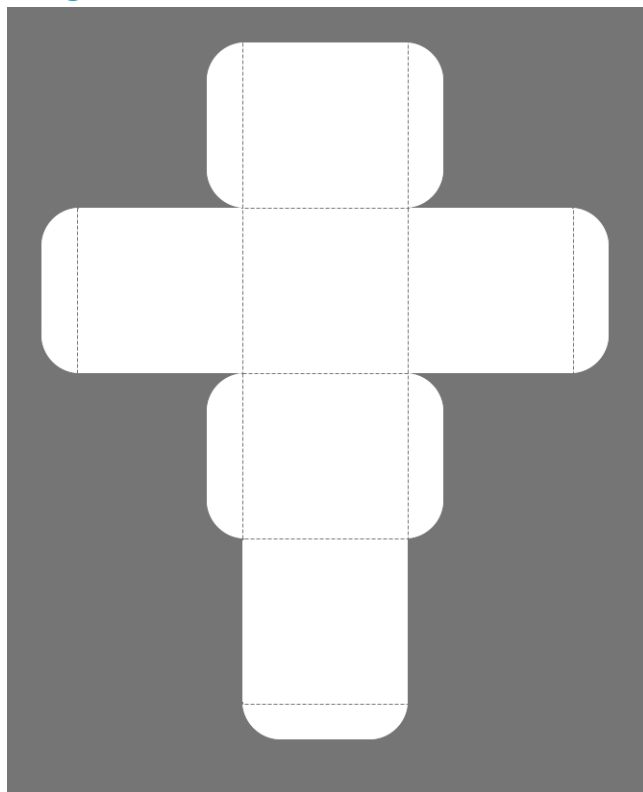


XL

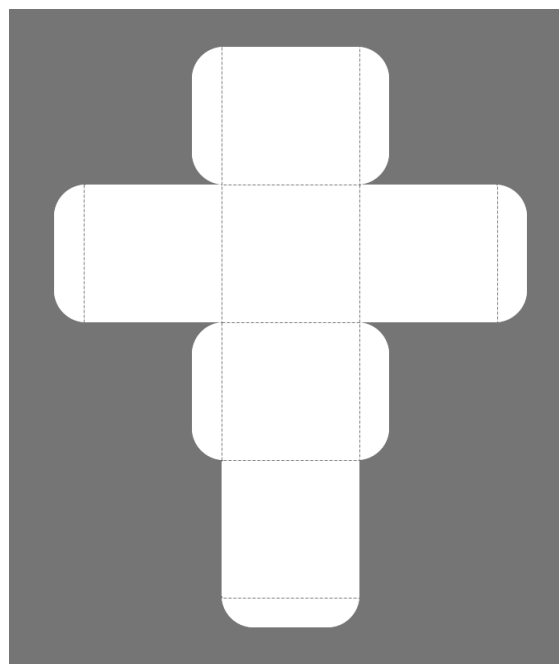
Small



Large



Medium



Visit sunidoll.com for more patterns and tutorials.

SUNI