

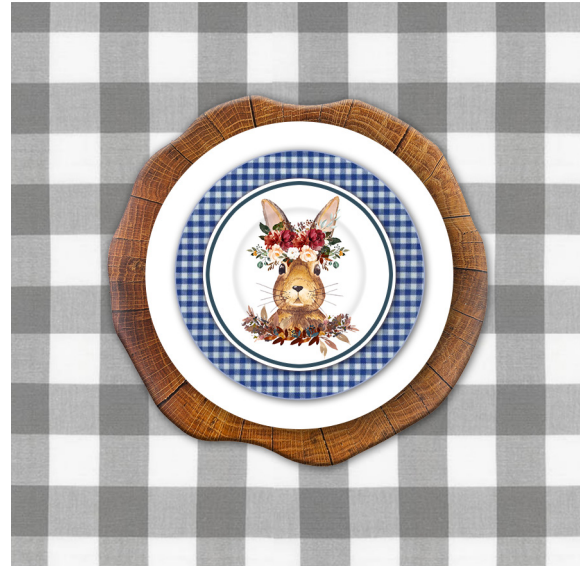
Table Setting for Dolls

Instructions

Materials

- A colour printer
- Printer paper
- Cardboard or cardstock of your choice*
- Scissors
- Glue
- ModPodge/sealer (optional)

* I like to use thicker cardboard for the bases to give more height to the plates. This is a good project for recycling cardboard from cereal boxes, egg carton lids, packaging, etc.



Directions

1. Print the pattern pages onto paper and cut out the **fronts** and **bases** roughly, leaving some excess around the outer/dashed lines. Glue them to cardboard and trim to the outer/dashed lines. Cut out the **backs** along the outer/dashed lines and glue to the fronts. Trim to the pattern lines. Glue the bases to the backs.
2. For added durability, and to add gloss to your plates, seal them with ModPodge or another brand of sealer. Make sure you wait for the sealer to dry completely before using the plates.

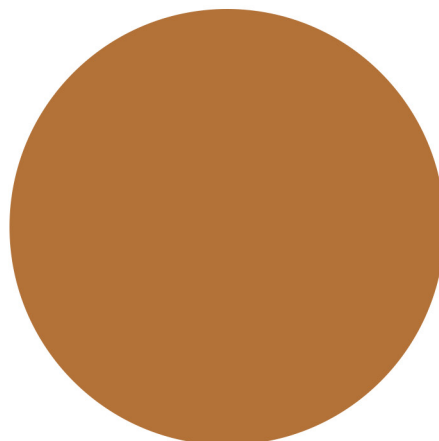
Note: the plates are not food-safe and should not be used for human food.

Pattern - Design #1

Placemat



Front



Back

© Tracey Marsden 2021. All Rights Reserved.
This pattern is for personal, non-commercial use only.

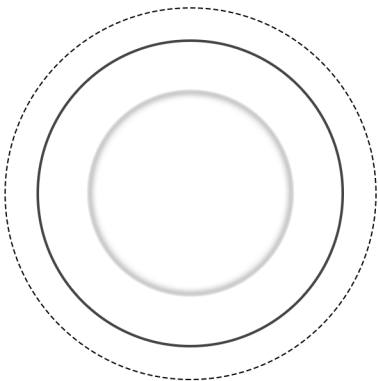
Visit sunidoll.com for more patterns and tutorials.

SUNI

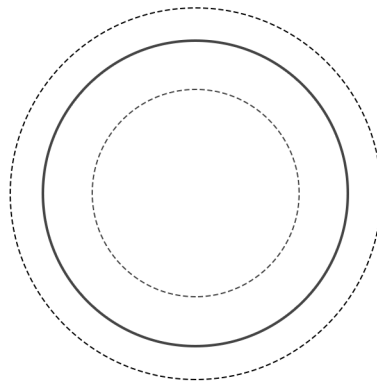
Table Setting for Dolls

Pattern - Design #1 Cont'd

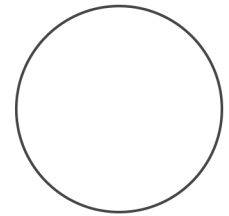
Large Plate



Front

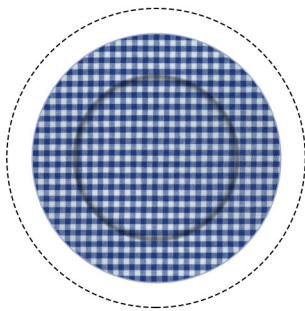


Back

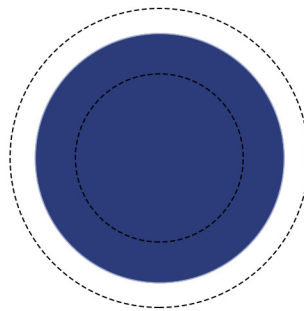


Base

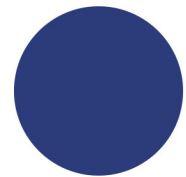
Medium Plate



Front



Back

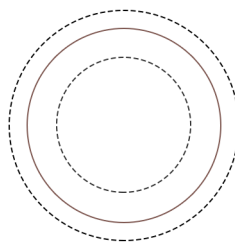


Base

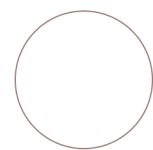
Small Plate



Front



Back



Base

© Tracey Marsden 2021. All Rights Reserved.
This pattern is for personal, non-commercial use only.

Visit sunidoll.com for more patterns and tutorials.

SUNI